



THE ASCOT ALL POLLED BULL SALE

8 NOVEMBER, 2013, 1PM



30 CHAROLAIS | 30 ANGUS | ON-PROPERTY 'NORTH TOOLBURRA' QLD

Welcome



WELCOME TO OUR SECOND ANNUAL BULL SALE, 2013.

Firstly thank you to everyone who attended and supported our inaugural bull sale. Thanks particularly to the buyers and under bidders. We really enjoyed the day and we hope everyone who attended had a good day.

This year has presented some real challenges for many in drought effected areas in QLD and NSW. We hope that we will see a break for the better in the weather and everyone can get back on their feet. We feel there is a great future in the cattle industry with exports growing considerably and the dollar slowly coming back in value. To this end we are continuing to invest heavily in continual improvement of our herds with both females and breed leading sires to support our AI & ET programs in both the Ascot Charolais & Angus herds. This continual improvement allows us to breed higher quality bulls that make our customer's operations more profitable and viable with market focused progeny.

Our focus on the following main traits for both breeds remains the same:

- Kind natured cattle
- Polled cattle
- Early to Mid maturing
- Ability to lay down fat & finish earlier
- Fertility
- MSA targeted

We believe for the cattle industry to be more long term viable we need to be able to be turn off progeny quicker and at higher prices (due to better quality meat) both on grass and in the feedlot. To this end we are aiming to breed bulls that will have progeny that will assist our customers in this aim.

YEARLING BULL PROGRAM:

As per last year we will have working age yearling bulls on offer as well as some 2 year olds this year to show what the bulls can mature into. We have had good feedback from people we have spoken to who have had success with the yearling bulls last year. As stated before they do need a little bit of management after first joining then after that they are able to fend for themselves well. We practice what we preach in our herd and use top class yearling bulls in some of our joinings with great success. The purchase of yearling bulls can allow:

- Potentially lower initial purchase price due to lower input costs for breeder
- Better adaptability to harsher conditions when they are lighter and more active
- Potentially an extra year of use at start of breeding life and an extra year at end of breeding life.
- Less injuries from fighting at younger age.

CHAROLAIS PROGRAM

We are continuing to focus on breeding all Polled Charolais cattle as much as possible. We have calved approx 95% polled calves this year. We are continually testing progeny for the Homozygous polled gene to allow us to fast track this program. While we are concentrating on the polled trait we are not losing sight of

other important traits such as carcass, type and confirmation. We run an all encompassing program and bulls in the sale are new generation, positive fat, high carcass trait, calving ease bulls. We also still want bulls to look like bulls should. There are a number of homozygous bulls in the sale this year. This is a real opportunity as it is proving quite difficult to breed bulls with this rare gene. Bulls in the sale are by world leading AI sires such as Harvie Redemption (Canadian champion), LT Rio Bravo (semen no longer available), Doc Silver (semen no longer available), LT Blue Grass, as well as our own sires. Some of our sale bulls are in the top 1% for most carcass traits.

ANGUS PROGRAM

We have upgraded our breeder herd again in the last 12 months with the purchase of females from the record breaking Millah Murrah stud herd. We have bulls in this years sale from these females which are some of our best. This has been a good move for our stud to take it to a higher standard which will benefit our clients. We are focusing on breeding deep, thick, soft, quiet angus bulls which are well muscled and easy finishing. Bulls in the sale once again are mainly by breed leading AI sires such as Te Mania Emperor, Te Mania Berkley, Te Mania Africa, Sitz New Designand Carabah Docklands to name a few.

GENERAL

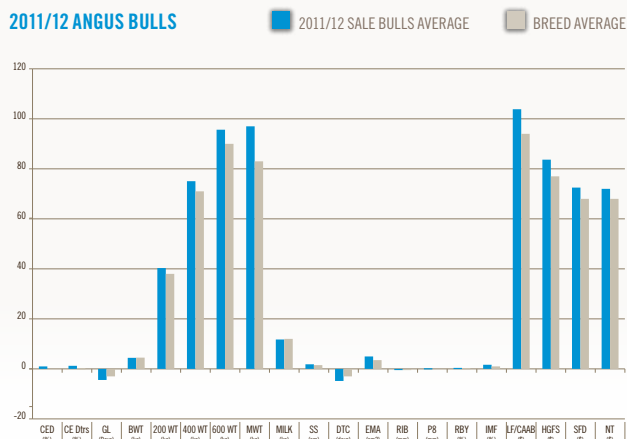
All Bulls have been:

- Blooded so can go into tick areas
- Double vaccinated 3 day & vibrio
- Vaccinated for 7 in 1 & Pesti
- All semen tested & examined
- Wormed with Cydectin in September

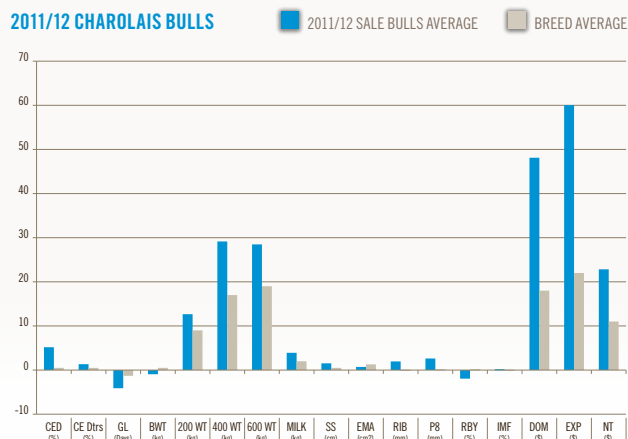
We look forward to seeing you at our sale and please join us for complimentary lunch and after sale drinks. Qld Agricultural Minister The Hon. Dr. John McVeigh will be in attendance at the sale & will open the sale.

Jim & Jackie.

2011/12 ANGUS BULLS



2011/12 CHAROLAIS BULLS



THE ASCOT
ALL POLLED BULL SALE



THE ASCOT

ALL POLLED BULL SALE

8 NOVEMBER, 2013 STARTING AT 1PM

ON PROPERTY 'NORTH TOOLBURRA' WARWICK, QUEENSLAND

30 ANGUS BULLS | 30 POLLED CHAROLAIS

WORKING AGE YEARLINGS & 2 YEAR OLD BULLS ALL POLLED ALL HIGH INDEXING CHOICE OF 2 LEADING BREEDS

30 DEEP, THICK, EASY DOING ANGUS BY BREED LEADING SIRES

30 NEW GENERATION, ALL POLLED, POSITIVE FAT, HIGH CARCASE TRAIT, CHAROLAIS

FREE DELIVERY TO ROMA, ROCKHAMPTON, GOONDIWINDI, EMERALD, GLEN INNES

AGENTS' CONTACTS



Blake Munro Andrew Meara
0428 862 469 0427 210 634



Nathan Purvis Shad Bailey
0427 324 078 0458 322 283



Anthony Ball Peter Brazier
0428 324 919 0418 967 421



Mike Wilson
0418 960 036



4% Commission
To Outside Agents



ASCOT CATTLE CO
CHAROLAIS & ANGUS STUDS

VENDORS' CONTACTS

JIM WEDGE M: 0419 714 652 E: jim@ascotcattle.com.au
JACKIE CHARD M: 0427 717 771 E: jchard1@bigpond.com

www.ascotcattleco.com.au

SALE INFORMATION



SALE DATE AND PRIOR INSPECTION TIME:

Selling will commence at 1.00pm on Friday 8th November, 2013.

Bulls may be inspected from 10.00 a.m. on the morning of the sale, or at any other time by arrangement with the agents or vendors.

SELLING SYSTEM:

Sale of animals will be conducted under normal auction conditions. Please check with the Selling Agents to obtain a buyer's number if you are considering making a purchase. Successful Purchasers are requested to give written advice to the Selling Agents, regarding transport arrangements, at the conclusion of the sale.

REBATE:

4% Rebate to outside agents registering Bull buyers, in writing, PRIOR to the sale, and settling on their behalf within 14 days of the date of invoice.

PHONE BIDDING:

We have full mobile phone coverage at the sale. If you intend purchasing over the phone, please contact the selling agents to reserve a line.

GST:

All animals are sold **exclusive** of GST.

INSURANCE:

Bulls are like any other piece of valuable farm equipment and it is wise to insure them, especially for their first six months of working life. There are a number of options available through Elders Insurance at the sale venue.

AUCTION PLUS

Auction Plus will be operating at the Sale. Please register 24hrs before the sale.

REGISTRATION:

Ownership transfer of bulls will be registered by the vendors with Angus Australia or Charolais Australia provided accurate transferee details are supplied with the Buyers Instruction form.

CATERING:

Please join us for complimentary lunch and after sale drinks.

PHYSICAL EXAMINATION OF BULLS

All bulls offered for sale will be vet checked near sale date and only sold if deemed satisfactory for the following inspections:

- Palpation of internal genitalia
- Palpation of Scrotal Contents
- Semen Testing

TEMPERAMENT

The bulls have been handled with horses, ATV utilities and on foot. We know their temperament individually and are confident that under normal circumstances each animal in the sale is of sound temperament. Understandably each year on sale day an occasional bull misbehaves due to the big change to the yard area and the pressures of strange people invading their space.

HEALTH QA:

The bulls are ready for immediate use. We have treated them as follows:

- Double vaccinated them with Vibrovax
- Vaccinated for Tick Fever
- Double Vaccinated them with 7 in 1
- Double Vaccinated for 3 Day
- Drench with Cydectin Pour On prior to sale





BULL HANDLING

On arrival at their new home it is important a suitable mob of animals is yarded to greet the bull and minimize the stress on the bull. Suitable animals include pregnant cows, steers, certainly not other bulls.

The bulls are in good joining condition at point of sale, but it is imperative to ensure good nutrition for the bull during the joining period. You should check the bulls regularly to see they are working, especially in the early stages of joining when the majority of problems occur and early intervention can minimize the damage to the bull and to conception rates.

When joining is complete, bulls should be drenched and placed on good pasture to get back into first grade health without being allowed to get over-fat.

WARRANTY

THE VENDOR WARRANTS THAT:

1. Bulls are fertile and capable of natural service within 6 months of date of sale to the purchaser ("Warranty Period"); and

THE VENDOR WILL EITHER:

1. Provide a satisfactory replacement or
2. Provide a credit for use at the next Ascot Cattle Co Bull Sale equal to the purchase price (excluding any costs and expenses of the purchaser in taking delivery) minus salvage value:

WHERE:

1. the purchaser claims a bull is infertile, upon purchaser submitting a veterinary report after the expiration of the Warranty Period stating that the bull is infertile or incapable of natural service, and a Statutory Declaration by the purchaser to the effect that the

substance of the report is true and correct The veterinarian must state that in his/her opinion there is no evidence that the bull has suffered any injury or illness during the Warranty Period which could have affected his breeding ability. The veterinary report and Statutory Declaration must be forwarded to the seller within 14 days of the Warranty Period expiring.

THE PURCHASER ACKNOWLEDGES THAT:

The purchaser does not rely and it is unreasonable for the purchaser to rely on the skill or judgment of the seller as to whether the bulls supplied are reasonably fit for any purpose for which they are being acquired.

To the extent permitted by law all other conditions and warranties implied by law in respect of the state, quality and condition of the bulls which may apart from this clause be binding on the Seller are excluded.

The Seller has no liability (including liability in negligence) to any person for any loss or damage consequential or otherwise suffered or incurred by that person arising from the sale of the bulls to the purchaser.

HEALTH & SAFETY OF VISITORS TO OUR SALE (RULES & ADVICE)

All the sale bulls have been screened for temperament and are quiet to handle under normal circumstances. However there are inherent risk associated with cattle handling.

VISITORS ENTER THE CATTLE PENS AT THEIR OWN RISK. CHILDREN MUST NOT ENTER THE YARDS.

People entering the yards are at risk of injury. Be especially alert of bulls fighting and if one is playful with you, do not respond by patting his head. What a bull considers a playful nudge can break human legs! We do not expect the bulls to be aggressive with humans, but sale day places extraordinary pressure on them as they experience an entirely foreign environment. Remember the quietest bull is in fact an unpredictable animal.

Do not crowd the bulls or loiter inside the pens. We cannot cover every example of the dangers of cattle handling, so please use common sense and be alert at all times. Don't enter the pens unnecessarily.

Please call upon any of the agents for an escort through the bulls if required. The days of bravado with stock have passed under current OH&S legislation.

DELIVERY

Agents Elders, Landmark and Colin Say & Co will be handling the organisation of delivery of Sale Cattle. Free freight is offered to:

- Roma
- Rockhampton
- Goondiwindi
- Emeralds and
- Glen Innes.

Responsibility goes to purchaser at fall of hammer. We recommend insuring all bulls.



WORKING AGE YEARLINGS BECOMING POPULAR



In Australia and other parts of the world, there is a trend towards using bulls at yearling age (12-18 months). This allows introduction of superior genetic material into herds a year earlier than normal, resulting in faster genetic improvement.

Their introduction has the potential to allow breeders to extend the working lives of bulls by a year or more, lowering the bulls costs of a herd. This extra workload is achieved at the time in their lives when they are young, lean, fit and exuberant. They are free of the structural problems that beset older bulls.

Yearling bulls have much to offer, both genetically and financially. However, poor management can reduce calving percentages, compromise animal welfare and limit their lifetime potential. In order to harness the immense potential of yearling bulls, special management is required-their age and physiological status demands it.

WHY ARE YEARLINGS DIFFERENT?

Apart from their age, yearling bulls are different from older bulls in a number of ways.

They are still growing strongly, and tend to be leaner, carrying less body fat reserves. They are usually fitter and more agile, although not necessarily stronger, than older bulls. They are also smaller in size and more subordinate to older bulls which makes them more injury-prone when mixed with them, especially in the sexually competitive environment of a joining group.

Yearling bulls are usually sexually inexperienced, are more likely to be sexually immature, and their health and body condition are far more sensitive to poor nutrition and the challenges of internal and external parasites.

Although special management is required, much of it is common sense.

WHY USE YEARLINGS?

Cattle producers with experience in managing yearlings often say that they prefer them because they settle in better, mix with other cattle more easily and are easier to handle than older bulls. However, there are some far more tangible incentives in using them.

In south-eastern Australia, the average working life of a bull is less than 3 years – not a very satisfactory performance for one of the main operational costs of a beef cattle enterprise. By first using bulls as yearlings, the working life of a bull can be extended by a year or more – a 25% increase. As a result, the purchase price and running costs of bulls can be spread over more calves. This reduces bull costs per calf and boosts profitability.

Yearling bulls also allow cattle breeders the opportunity to achieve faster rates of genetic improvement. This is due to the influence of what geneticists call 'generation interval', that is, the average age of parents when their calves are born. By using genetically superior bulls as young as possible, faster turnover rates of genes are achieved. Joining yearling bulls to yearling heifers can maximise genetic improvement by lowering generation intervals.

Yearling bulls are significantly less costly to produce. Seedstock suppliers sell their bulls 6-12 months earlier, which simplifies their management and reduces overheads.

In addition to these advantages, there is strong circumstantial evidence to suggest that bulls used first as yearlings have even longer working lives because of superior fitness and lower levels of body fat.

The more active lives of these bulls means that they are maintained at body weights below their genetic potential. As a result, less stress is placed on their skeletal structure when serving, with less likelihood of breakdowns occurring.

The two biggest causes of breakdowns in bulls are hip arthritis (over 50% of all wastage) and broken penis. Over-conditioning bulls for shows and sales, especially multivendor sales, exacerbates both these conditions. It would appear that bulls used first as yearlings are less affected by these serious sources of economic loss.

WILL YEARLING BULLS BE SEXUALLY MATURE?

Yearling bulls will generally be sexually mature if they:

- are well grown
- are in good condition (fat score of high 2 or low 3)
- are 12 months of age or older
- have a scrotal circumference of 32cm or more at
- 12–14 months. The onset of puberty is directly related to the level of nutrition.

Bulls on a high plane of nutrition are more likely to reach puberty at a younger age.



In some cases, this may be as young as 8 months of age. Poorly grown or low-condition bulls are risky for use as yearlings, as they may not have reached puberty.

Around puberty, testicles grow very quickly, resulting in a rapid increase in scrotal circumference. In well-grown breeds this 'growth spurt' is normally expected to take place between 8 and 13 months of age, under optimal nutrition.

SERVING ABILITY

Yearling bulls are usually sexually inexperienced. As a result, they are sometimes, but not always, a little clumsy and awkward. However, young bulls have very steep learning curves. This learning phase may cause minor delays in the start of calving. Should this be a problem, joining should start 7 or 14 days earlier than normal to compensate for the slight delay.

MATING MANAGEMENT

Yearling bulls can be effectively joined either individually or in peer groups. They should not be joined in a group with older bulls because of 'dominance'. In a mixed group, older bulls may get up to 75% of the cows in calf while young, subordinate bulls miss out. Joining yearlings with older bulls is not only wasteful and inefficient, it is also risky, as the young bulls tend to be more injury-prone. In addition, there is less risk of exposure to venereal diseases when young bulls are joined in peer groups.

SINGLE OR MULTIPLE JOINING?

Bulls that are being watched by other bulls are likely to serve females more often—they respond to an audience. Conception rates in multiple-joining groups are usually higher, which is understandable, since there are more services made in multiple-joining groups than in single-joining groups. It is not uncommon for bulls joined in groups to fight in the first week of joining, even though they had been run together before joining. Apparently they sometimes need to re-establish a pecking order. This settling-down phase may help explain why calves occasionally start arriving later than they should.

Multiple-joining groups have traditionally been a kind of on-farm insurance policy against the risk of having a dud—if one bull in the group is freeloading, the others will cover for him, and so conception rates don't suffer. But the insurance does not come free (it never does).

There is evidence that injury rates in multiple-joining groups are higher, especially when the bulls in the group are of different ages.

The incidence of 'broken penis' is higher in multiple groups, especially when young bulls are joined in a group with older bulls. Yearling bulls should never be joined with older bulls—the risk of injury is just too great. They should be joined either by themselves or with other yearlings.

WON'T YEARLINGS BE TOO SMALL TO REACH MY COWS?

If the biggest cows in a joining group fail to conceive, size may be a factor. However, it is risky making 'blanket' statements. The sexual prowess of some small, high-serving, yearling bulls serving dry cows significantly larger than themselves has been witnessed at Trangie Agricultural Research Station, and one wonders how it was physically possible. Sex is apparently a wonderful motivator!

WON'T JOINING BULLS AS YEARLINGS KNOCK THEM AROUND?

Bulls do not die from too much sex. However, they do lose condition. This will depend on their health, the quality of their feed, the length of the joining period and the number of females they are joined with. A lot of common sense is needed in order to strike a balance. In extensive areas with only average or poor quality feed, the joining season should be restricted to 6-8 weeks.

The use of yearling bulls is limited only by their health and fitness. It does not matter whether they 'won't grow out' as it's just not relevant. If our beef industry is to make progress, we must purge our minds of the belief that a bull has to be fat and well grown to be any good. The value of a bull should be measured by the performance of his offspring—not on what he looks like. After all, when was the last time you saw a fat rabbit, fox or roo? Those species carry no subcutaneous fat, yet they don't appear to be facing extinction!

Maintaining bulls in anything fatter than 2 or 3 score condition is wasteful, counterproductive and inefficient. Bulls that are allowed to get fatter than this are either sexually inactive or under-used.

WON'T YEARLING BULLS HAVE SMALLER CALVES?

It is surprising how many cattle producers think that young bulls are more likely to sire small calves. They are purchased in the mistaken belief that they can reduce calving difficulties. Clearly that is not the case. There is no relationship between the age of a bull at joining and the weights of his calves.

MATING POTENTIAL

A more conservative approach is needed in the first year, until you have a track record for the performances of yearling bulls on your farm. In these situations, mating loads of only 25-30 females are recommended.

The condition of the yearling bulls is critical. If they drop below 2 score condition, sperm production may be impaired.

SUMMARY

In order to harness the potential of yearling bulls there are three crucial management requirements:

1. Join them either alone or with bulls of the same age.
2. Join yearling bulls for 6-8 weeks (2 cycles) only, then spell them for at least 3 months.
3. After removing yearling bulls from their joining groups, place them on high quality feed in specially prepared paddocks.

Experience has shown that many young bulls have been ruined because they have been joined for too long and under conditions that have challenged their survival. If, at any stage, yearling bulls drop below 2 score condition, they should be withdrawn from their joining group immediately.

WHY POLLED?



THE ASCOT CHAROLAIS POLLED FOCUS

Ascot is devoted to breeding Charolais cattle that are polled but still retain the correct phenotype, carcass qualities and fertility. Polled cattle have sometimes been criticized for losing bone, phenotype and carcass quality and perhaps rightfully so as in the past some breeders may have just bred the polled gene and disregarded the other important traits.

At Ascot we are endeavoring to have the best of both worlds. Great polled cattle.

Over the last couple of years we have made some real headway in this and through testing many of our cattle for the HOMOZYGOUS polled gene at the University of Qld we have found some lines or combinations that produce this gene more readily.

For those of you who are not familiar with the term Homozygous polled it means in summary animals that test with a very high percentage of this gene (say 90% and above) have a very high probability of throwing nearly all calves that are polled or perhaps scurred. This is even if the

other parent is horned. The gene once the animal has it is that strong that it can override the other parent.

At present we are using 5 homozygous polled stud sires in our herds at Warwick and Glen Innes. These are walking sires. We also use AI sires from Australia and overseas that have this gene. This year we tested a group of 50 2 year old heifers and of that 35 came back has homozygous polled. A result that enables us to mix and match our sires with these heifers so we can maintain the great Charolais carcass and fertility qualities.

This year we will have 5 homozygous(90%) polled bulls in the sale. This is great opportunity for both commercial breeders and stud breeders.

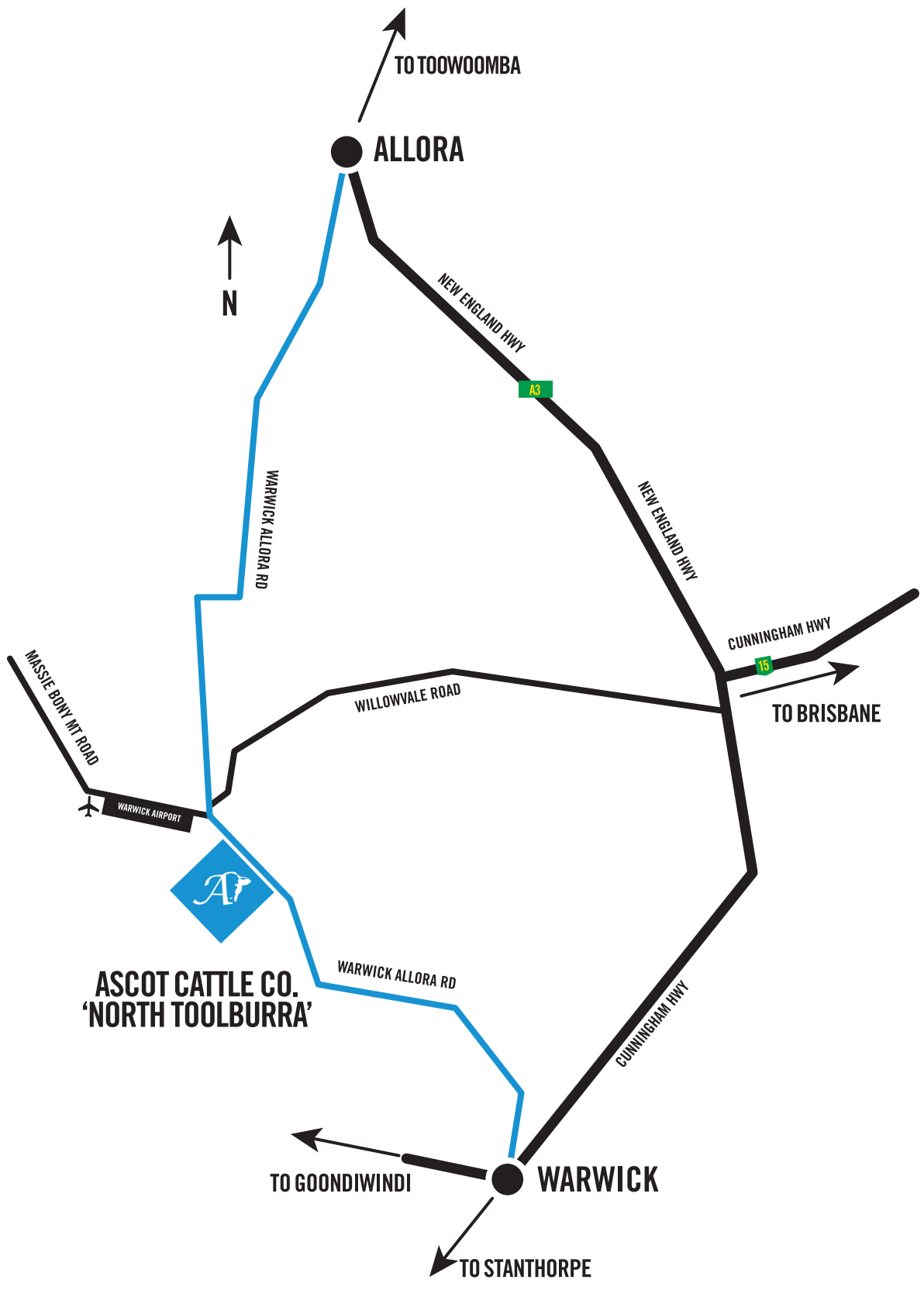
We as a stud thought over whether we should hold on to this perceived advantage and keep these bulls or just sell to them to commercial producers only but we are great believers in improving the Charolais breed and improving the cattle industry in general so we have decided to release some of these bulls to whomever wants to take advantage of it and

introduce this advantage to their stud herds as well. An example would be if a charbray breeder wanted to breed a line of all polled charbrays they could use one of these homozygous tested bulls.

“WE WOULD LIKE THIS TO BE OUR VERY SMALL CONTRIBUTION TO THE GREAT CHAROLAIS BREED AND THE INDUSTRY”

THE ADVANTAGES OF HAVING POLLED ARE FAIRLY OBVIOUS BUT INCLUDE:

- Time and stress saving (for both animal and owner) not having to dehorn
- Reduces bruising and improves profitability
- Appeases the animal liberation movement
- Attractive cattle at sale time improving demand.





THE ASCOT ADVANTAGE

We are a customer focused Angus and Charolais breeding operation which aims to deliver low risk, thick, polled bulls, bred with an MSA targeted approach.

Our breeding headquarters are located at North Toolburra Station, Warwick, Queensland. We also have a breeding operation at Glen Innes in Northern NSW. We have around 400 stud breeding females consisting of roughly 200 Angus and 200 Charolais.

We feel strongly that the industry will benefit from bulls that have had been bred under our strict standards.

These strict standards are designed to produce bulls that will improve the long term efficiency and profitability of the beef industry.

When you buy an Ascot Angus or Charolais bull you can be assured that the very best of both modern and traditional methods have been used. The result is progeny that will calve easily, grow, finish quickly and grade highly.

Cattle are our passion and we look forward to hearing how we can work with you. Inspections are welcome at any time by appointment or visit our web site for news and updates.

PHENOTYPE

Whilst we use the very latest of breeding technologies, phenotype is a major part of our breeding program. Our bulls will be quiet, polled, have great skin type and exhibit, weight, softness and easy doing ability.

CARCASE FOCUSED

We use ultra sound scanning for EMA, IMF% and fat cover. Combined with weight for age data, this gives us strong information on what our cattle can do. This data is submitted to Breedplan and is also available to clients whilst assessing.

GROWTH FOCUS

Weight is money. With that said we are focused on cattle that can grow quickly to MSA standards. The added benefit of this is moderate mature cow weight thus maintaining productive and efficient replacement females.

CALVING EASE

We weigh every calf born. This ensures that the data supplied is 100% accurate. So whether you buy a terminal or a self replacing sire from us you will have an accurate estimation to the weight of your calves. We also record for days to calving, calving ease, scrotal and gestation length.



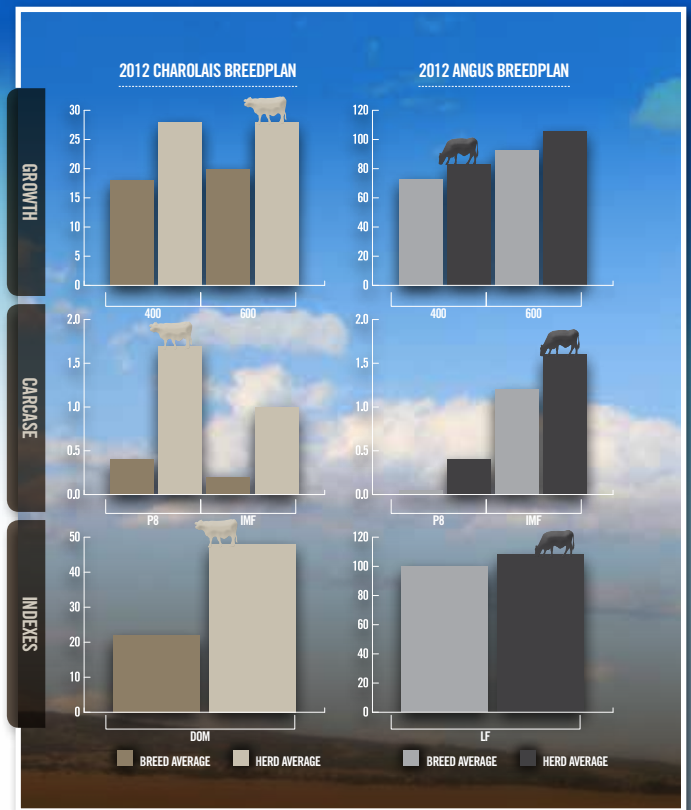
BETTER BREEDING DECISIONS

THE ASCOT
ALL POLLED BULL SALE



The perfect complement to your herd, Ascot bulls will add kilos, carcass and finishing ability.

The option of 2 breeds provides you with more options and genetic diversity for your herd.



MARKET FOCUS

MSA grading is the basis to our selection criteria. Our bulls will add carcass value and eating quality to your progeny. We select for positive fat cattle, (for both fertility and finishing v) and for cattle that can exhibit marbling.

INDEPENDENTLY ASSESSED

All bulls are semen tested and vetted for soundness.

HEALTH

Every bull sold has been vaccinated for Pesti Virus, 7 in 1, 3 Day, Tick Fever, and Vibrio.

DATA RECORDED

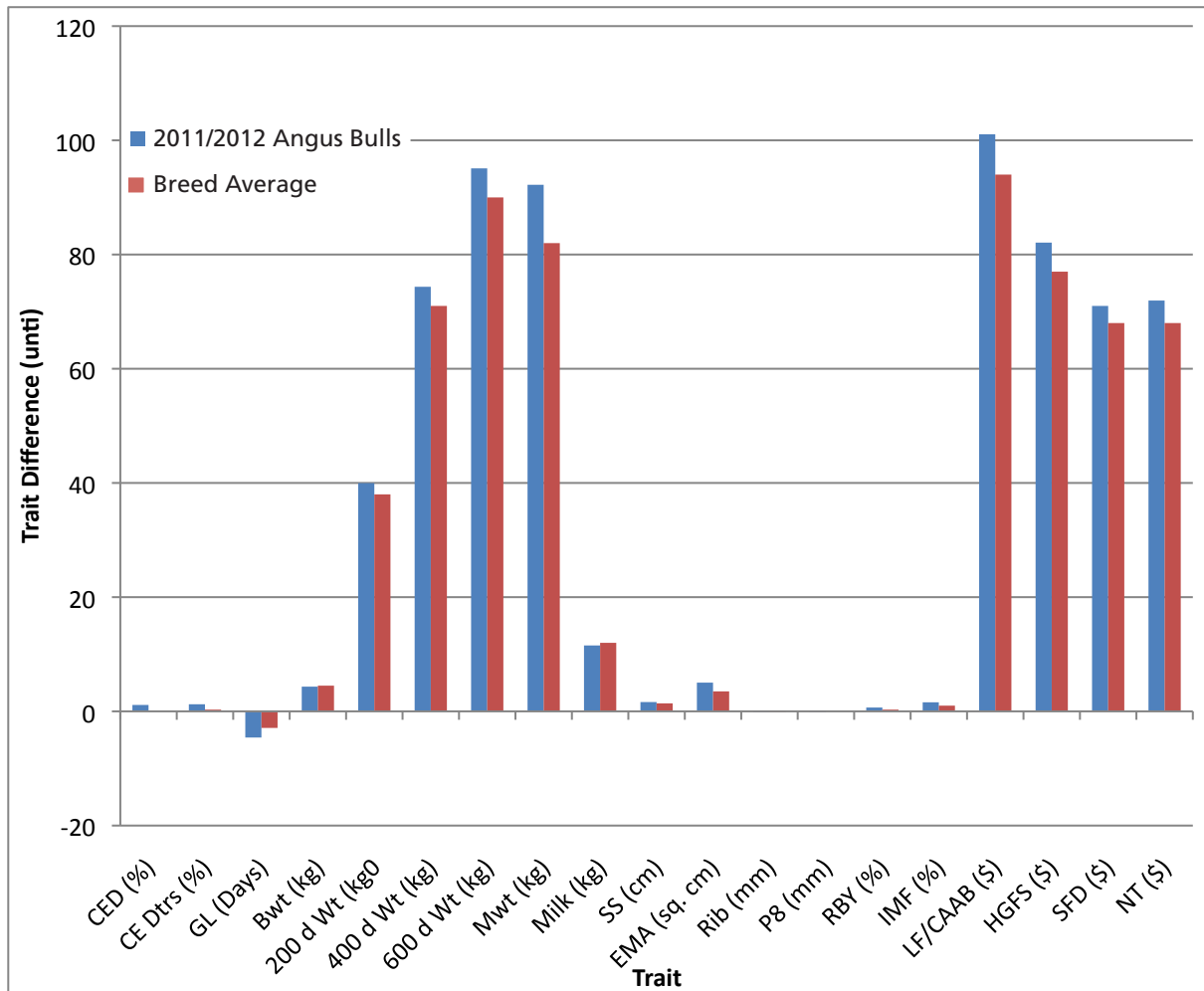
We submit data to Breedplan for the following traits. CE, CE Dtrs, GL, Bth Wt, 200D, 400D, 600D, Mat. Cow Wt, Milk, Scrotal, Days to calving, Carcass Wt, EMA, Rib Fat, Rump Fat, Retail Beef Yield, IMF%, Long Fed, Heavy Grass Fed, Short Fed and Terminal Indexes.





ANGUS CATTLE

LOTS 1 - 30





REFERENCE SIRE

CALVED: 29/07/2006

IDENT: VTMB1

TE MANIA BERKLEY B1(AI)

GENETIC STATUS: AMF, NHF, CAF, MAF, DDF

S A F FOCUS OF E R USA6163

Sire: **TE MANIA YORKSHIRE Y437(AI) VTM437**
TE MANIA LOWAN U275(AI)(ET) VTMU275

KENNY'S CREEK SANDY S15(AI) NDIS15

Dam: **TE MANIA LOWAN Z53(AI)(ET) VTMZ53**
TE MANIA LOWAN V129(ACR)(AI)(ET) VTMV129



SEPTEMBER 2012 ANGUS AUSTRALIA BREEDPLAN

	CED	CEM	GL	BW	200D	400D	600D	MCW	MILK	SS	DTC	CWT	EMA	RIB	RUMP	RBY	IMF					
	+4.9	+5.4	-10.2	+3.3	+54	+100	+123	+148	+8	+2.6	-5.8	+76	+6.5	+0.4	+0.1	+0.9	+2.8					
	93%	88%	99%	99%	99%	99%	99%	97%	95%	98%	66%	93%	87%	93%	93%	87%	85%					
\$ INDEX VALUES	LONG FED			+\$139			HEAVY GRASS FED			+\$114			SHORT FED			+\$98			TERMINAL		+\$95	

TRAITS OBSERVED: GL,CE,BWT,200WT,400WT(X2),SS,FAT,EMA,IMF

REFERENCE SIRE

CALVED: 28/08/2008

IDENT: QHED62

CARABAR DOCKLANDS D62(AI)

GENETIC STATUS: AMFU, NHFU, CAF, DDF

ARDROSSAN DIRECTION W109(AI)(ET) NAQW109

Sire: **KAROO W109 DIRECTION Z181 NENZ181**
KAROO FLATS MADONNA V56(AI) NENV56

BON VIEW NEW DESIGN 1407 USA1407

Dam: **CARABAR BLACKCAP MARY B12(AI)(ET) QHEB12**
BOOROOMOOKA TRACY T4(AI)(ET) NGMT4



SEPTEMBER 2012 ANGUS AUSTRALIA BREEDPLAN

	CED	CEM	GL	BW	200D	400D	600D	MCW	MILK	SS	DTC	CWT	EMA	RIB	RUMP	RBY	IMF					
	+3.0	+2.1	-8.9	+4.6	+48	+103	+136	+119	+12	+3.3	-5.6	+71	+8.1	+1.3	+2.0	-0.1	+2.3					
	65%	54%	96%	98%	94%	93%	90%	79%	59%	92%	48%	81%	71%	80%	81%	71%	69%					
\$ INDEX VALUES	LONG FED			+\$154			HEAVY GRASS FED			+\$118			SHORT FED			+\$98			TERMINAL		+\$101	

TRAITS OBSERVED: GL,BWT,200WT,400WT,600WT,SS,FAT,EMA,IMF

REFERENCE SIRE

CALVED: 09/08/2009

IDENT: E343 (T&F)

TE MANIA EMPEROR E343(AI)

GENETIC STATUS: AMF, NHF, CAF, RDF, MAF, DDF

TE MANIA YORKSHIRE Y437(AI) VTM437

Sire: **TE MANIA BERKLEY B1(AI) VTMB1**
TE MANIA LOWAN Z53(AI)(ET) VTMZ53

B T ULTRAVOX 297E USA297E

Dam: **TE MANIA LOWAN Z74(AI)(ET) VTMZ74**
TE MANIA LOWAN V201(AI)(ET) VTMV201



SEPTEMBER 2012 ANGUS AUSTRALIA BREEDPLAN

	CED	CEM	GL	BW	200D	400D	600D	MCW	MILK	SS	DTC	CWT	EMA	RIB	RUMP	RBY	IMF					
	+2.2	+1.9	-6.1	+5.2	+53	+97	+121	+132	+15	+1.3	-4.5	+73	+6.9	+0.3	-0.1	+1.1	+2.6					
	80%	65%	98%	99%	98%	98%	96%	82%	66%	96%	48%	86%	77%	87%	87%	77%	75%					
\$ INDEX VALUES	LONG FED			+\$138			HEAVY GRASS FED			+\$109			SHORT FED			+\$96			TERMINAL		+\$95	

TRAITS OBSERVED: GL,CE,BWT,200WT(X2),400WT,SS,FAT,EMA,IMF

REFERENCE SIRE

CALVED: 03/04/2009

IDENT: E614

DUNOON EVIDENT E614(AI)(ET)

GENETIC STATUS: AMF, NHF, CAF, RDF, MAF, DDC

B/R NEW DIMENSION 7127 USA7127
Sire: TE MANIA BARTEL B219(AI)(ET) VTMB219
 TE MANIA JEDDA W85(AI)(ET) VTMW85

DUNOON HIGHMARK Y262(AI)(ET) BHRY262
Dam: DUNOON ELSA B681 BHRB681
 DUNOON ELSA X602(AI)(ET) BHRX602



SEPTEMBER 2012 ANGUS AUSTRALIA BREEDPLAN

	CED	CEM	GL	BW	200D	400D	600D	MCW	MILK	SS	DTC	CWT	EMA	RIB	RUMP	RBY	IMF				
	-8.2	-1.2	-0.4	+6.0	+54	+98	+123	+93	+15	+3.5	-2.8	+84	+12.4	0.0	-1.0	+2.2	+2.8				
	78%	60%	98%	99%	98%	98%	92%	79%	62%	96%	46%	85%	75%	85%	85%	75%	74%				
\$ INDEX VALUES	LONG FED			+\$149			HEAVY GRASS FED			+\$110			SHORT FED			+\$96		TERMINAL		+\$106	

REFERENCE SIRE

CALVED: 09/09/2009

IDENT: HIOE7

AYRVALE BARTEL E7(AI)(ET)

GENETIC STATUS: AMF, NHF, CAF, RDF, MAF, DDF

B/R NEW DIMENSION 7127 USA7127
Sire: TE MANIA BARTEL B219(AI)(ET) VTMB219
 TE MANIA JEDDA W85(AI)(ET) VTMW85

MYTTY IN FOCUS USA13880818
Dam: EAGLEHAWK JEDDA B32(AI) BVVB32
 EAGLEHAWK JEDDA Z48(AI) BVVZ48



SEPTEMBER 2012 ANGUS AUSTRALIA BREEDPLAN

	CED	CEM	GL	BW	200D	400D	600D	MCW	MILK	SS	DTC	CWT	EMA	RIB	RUMP	RBY	IMF				
	+4.1	+2.2	-4.7	+2.2	+44	+85	+106	+72	+20	+2.0	-4.3	+69	+11.3	+1.4	+1.4	+0.8	+3.6				
	77%	61%	97%	98%	96%	97%	85%	73%	61%	96%	46%	82%	75%	85%	84%	74%	73%				
\$ INDEX VALUES	LONG FED			+\$167			HEAVY GRASS FED			+\$112			SHORT FED			+\$99		TERMINAL		+\$91	

TRAITS OBSERVED: BWT,200WT,400WT,600WT,SS,FAT,EMA,IMF

REFERENCE SIRE

CALVED: 13/10/2009

IDENT: QHEE52

CARABAR DIRECTION B35 E52(AI)

GENETIC STATUS: AMFU, NHFU, CAFU, DDF

ARDROSSAN DIRECTION W109(AI)(ET) NAQW109
Sire: CARABAR BOLLON DIRECTION W109 B35(AI)(ET) QHEB35
 BOOROOMOOKA TRACY T4(AI)(ET) NGMT4

S A NEUTRON 377 USA12760345
Dam: CARABAR HEATHER C5(AI)(ET) QHEC5
 CARABAR HEATHER Z24(AI)(ET) QHEZ24



SEPTEMBER 2012 ANGUS AUSTRALIA BREEDPLAN

	CED	CEM	GL	BW	200D	400D	600D	MCW	MILK	SS	DTC	CWT	EMA	RIB	RUMP	RBY	IMF				
	-0.1	+0.4	-5.2	+6.4	+58	+96	+133	+128	+12	+3.0	-4.2	+74	+6.6	+0.2	+0.5	+0.5	+1.6				
	53%	43%	65%	88%	83%	79%	78%	68%	47%	78%	41%	68%	58%	64%	65%	57%	53%				
\$ INDEX VALUES	LONG FED			+\$131			HEAVY GRASS FED			+\$110			SHORT FED			+\$87		TERMINAL		+\$99	

TRAITS OBSERVED: BWT,200WT,400WT,600WT(X2),SS,FAT,EMA,IMF

LOT 1 ASCOT HEADLINE H2

CALVED: 10/02/2012

IDENT: QQFH2

GENETIC STATUS: AMFU, NHFU, CAFU, DDF

ARDROSSAN ADMIRAL A2(AI)(ET) NAQA2

Sire: KANSAS DARWIN D66(AI) NKLD66

KANSAS FARMERS DAUGHTER A69 NKLA69

TE MANIA INFINITY 04 379 AB NZE04379

Dam: KANSAS RITA E3(AI) NKLE3

KANSAS EXACTLY B215 NKLB215

Comments: This bull is a real meat machine. One of the heaviest weight for age bulls & only a yearling. He is extremely easy doing & great ability to lay down fat fast. By one of our good Kansas females. Top 5% Retail Beef Yield & EMA. Top 20% Calving Ease & Long Fed Index.

TRAITS OBSERVED: BWT,200WT,400WT,600WT,SS,FAT,EMA,IMF



SEPTEMBER 2012 ANGUS AUSTRALIA BREEDPLAN

	CED	CEM	GL	BW	200D	400D	600D	MCW	MILK	SS	DTC	CWT	EMA	RIB	RUMP	RBY	IMF
	-2.4	-2.8	-2.6	+5.7	+43	+79	+103	+96	+13	+1.4	-4.2	+58	+5.2	+0.5	-0.1	+0.2	+2.1
	43%	39%	50%	75%	66%	67%	68%	60%	44%	70%	37%	58%	51%	55%	57%	50%	46%

\$ INDEX VALUES	LONG FED	HEAVY GRASS FED	SHORT FED	TERMINAL
	+\$110	+\$81	+\$69	+\$76

Purchaser: \$

LOT 2 PERTANGUS GOLIATH G156

CALVED: 21/09/2011

IDENT: VGGG156

GENETIC STATUS: AMFU, NHFU, CAFU, DDF

HYLINE RIGHT TIME 338(ET) USA13058662

Sire: PERTANGUS RIGHTTIME B48(AI) VGGB48

PERTANGUS V77(AI) VGGV77

GARDENS HIGHMARK USA13047487

Dam: PERTANGUS C134(AI) VGGC134

PERTANGUS Y17(AI) VGGY17

Comments: Top 10% 200D wt. Top 15% 600D wt & Scrotal Size. A bull that stands out from the mob. Slick coated & easy doing. A bull we think a lot of.

TRAITS OBSERVED: BWT,200WT,400WT,600WT,SS,FAT,EMA,IMF



SEPTEMBER 2012 ANGUS AUSTRALIA BREEDPLAN

	CED	CEM	GL	BW	200D	400D	600D	MCW	MILK	SS	DTC	CWT	EMA	RIB	RUMP	RBY	IMF
	-0.4	-0.8	-4.3	+6.0	+48	+80	+108	+99	+17	+2.1	-3.7	+56	+3.5	-0.4	-0.4	+0.4	+1.4
	44%	40%	52%	78%	70%	67%	69%	61%	50%	71%	39%	59%	51%	55%	57%	50%	46%

\$ INDEX VALUES	LONG FED	HEAVY GRASS FED	SHORT FED	TERMINAL
	+\$106	+\$87	+\$73	+\$78

Purchaser: \$

LOT 3 ASCOT NEW DESIGN H7 (AI)

CALVED: 06/03/2012

IDENT: QQFH7

GENETIC STATUS: AMFU, NHFU, CAFU, MAF, DDF

BON VIEW NEW DESIGN 1407 USA1407

Sire: SITZ NEW DESIGN 458N USA14474596

SITZ ELLUNAS ELITE 3308 USA13028479

HYLINE RIGHT TIME 338(ET) USA13058662

Dam: PERTANGUS RIGHTTIME B145(AI) VGGB145

PERTANGUS V90(AI) VGGV90

Comments: Top 1% 600D wt & Scrotal Size. Top 5% 200 & 400D wts & all indexes. Top 15% for Milk. STUD SIRE POTENTIAL. Yearling bull that oozes quality with extraordinary bone, thickness, spring of rib & huge scrotal. He also maintains good strength of spine. Well balanced EBVs and one of the best Sitz New Design bulls we have seen. Always been heaviest in contemporary group with very quiet nature. Very hard to part with. Quarter semen share retained in bull.

Go to www.ascotcattle.com.au to view a video of this bull

TRAITS OBSERVED: BWT,200WT,400WT,SS,FAT,EMA,IMF



SEPTEMBER 2012 ANGUS AUSTRALIA BREEDPLAN

	CED	CEM	GL	BW	200D	400D	600D	MCW	MILK	SS	DTC	CWT	EMA	RIB	RUMP	RBY	IMF
	-1.7	+0.4	-3.7	+6.2	+50	+96	+127	+109	+15	+3.8	-6.1	+65	+5.6	-0.4	-0.4	+0.7	+1.8
	56%	52%	60%	77%	70%	71%	71%	66%	59%	73%	44%	64%	58%	61%	62%	57%	54%

\$ INDEX VALUES	LONG FED	HEAVY GRASS FED	SHORT FED	TERMINAL
	+\$132	+\$107	+\$89	+\$94

Purchaser: \$

LOT 4 KANSAS GOVERNOR GENERAL G306

CALVED: 30/09/2011

IDENT: NKL G306

GENETIC STATUS: AMFU, NHFU, CAFU, DDF

KAROO W109 DIRECTION Z181 NENZ181

Sire: **CARABAR DOCKLANDS D62(AI) QHED62**

CARABAR BLACKCAP MARY B12(AI)(ET) QHEB12

YTHANBRAE HENRY VIII U8(AI)(ET) VLYU8

Dam: **KANSAS RITA Z172(AI) NKLZ172**

YTHANBRAE PRECISION V470(AI)(ET) VLYV470

Comments: Top 5% 200, 400, 600D wts, Carcass wt & all indexes. Top 15% for Eye Muscle. A stand out bull by Carabah Docklands. Highest indexing Angus bull in the sale with well balanced EBVs across the board. Don't overlook him.

Go to www.ascotcattle.com.au to view a video of this bull



TRAITS OBSERVED: BWT,200WT,600WT(X2),SS,FAT,EMA,IMF

SEPTEMBER 2012 ANGUS AUSTRALIA BREEDPLAN

ANGUS	CED	CEM	GL	BW	200D	400D	600D	MCW	MILK	SS	DTC	CWT	EMA	RIB	RUMP	RBY	IMF		
	+0.9	+1.4	-5.8	+5.4	+51	+97	+126	+107	+13	+1.8	-4.7	+71	+6.3	-0.6	-0.4	+0.5	+2.1		
	46%	39%	61%	79%	71%	69%	70%	62%	46%	70%	36%	60%	52%	59%	60%	52%	49%		
\$ INDEX VALUES	LONG FED			+\$140			HEAVY GRASS FED			+\$107			SHORT FED		+\$92		TERMINAL		+\$93

Purchaser: \$

LOT 5 ASCOT GLOBAL G39 (APR) (AI)

CALVED: 26/08/2011

IDENT: QQFG39

GENETIC STATUS: AMFU, NHFU, CAFU, DDF

TE MANIA YORKSHIRE Y437(AI) VTM Y437

Sire: **TE MANIA BERKLEY B1(AI) VTMB1**

TE MANIA LOWAN Z53(AI)(ET) VTMZ53

Dam: **ASCOT X345(APR) QQFX345**

Comments: A son of the \$65,000.00 Te Mania Berkley sire. This bull is full of red meat & is long, thick, deep & quiet. Balanced EBVs & suits the short grass & grain fed program to a tee. Very easy doing. Top 10% Calving Ease & Scrotal. Top 20% 200, 400 & Carcass wts & Grass & Short Fed Indexes.



TRAITS OBSERVED: BWT,200WT,400WT,600WT(X2),SS,FAT,EMA,IMF

SEPTEMBER 2012 ANGUS AUSTRALIA BREEDPLAN

ANGUS	CED	CEM	GL	BW	200D	400D	600D	MCW	MILK	SS	DTC	CWT	EMA	RIB	RUMP	RBY	IMF		
	+2.9	+3.1	-6.5	+3.5	+45	+88	+103	+111	+9	+2.8	-	+63	+4.7	-0.4	-0.8	+1.1	+1.5		
	47%	44%	52%	74%	66%	66%	62%	55%	49%	73%	-	57%	51%	55%	56%	50%	46%		
\$ INDEX VALUES	LONG FED			+\$106			HEAVY GRASS FED			+\$94			SHORT FED		+\$87		TERMINAL		+\$78

Purchaser: \$

LOT 6 ASCOT AFRICA G19 (APR) (AI)

CALVED: 1/08/2011

IDENT: QQFG19

GENETIC STATUS: AMFU, NHF, CAF, DDF

TE MANIA ULONG U41(AI)(ET) VTMU41

Sire: **TE MANIA AFRICA A217(AI) VTMA217**

TE MANIA JEDDA Y32(AI)(ET) VTM Y32

Dam: **ASCOT X293(APR) QQFX293**

Comments: A bull with huge capacity & depth. Probably the easiest doing bull in the sale. By Te Mania Africa he has well balanced EBVs with positive fat. Good natured bull. Above breed average for most traits & indexes. Low birth weight EBV.



TRAITS OBSERVED: BWT,200WT,600WT(X2),SS,FAT,EMA,IMF

SEPTEMBER 2012 ANGUS AUSTRALIA BREEDPLAN

ANGUS	CED	CEM	GL	BW	200D	400D	600D	MCW	MILK	SS	DTC	CWT	EMA	RIB	RUMP	RBY	IMF		
	+0.5	+1.6	-3.5	+3.5	+30	+69	+85	+70	+15	+2.8	-5.1	+43	+5.8	+0.4	+0.5	+1.0	+1.6		
	48%	44%	54%	74%	67%	63%	65%	58%	52%	66%	40%	56%	50%	53%	54%	49%	47%		
\$ INDEX VALUES	LONG FED			+\$105			HEAVY GRASS FED			+\$83			SHORT FED		+\$74		TERMINAL		+\$69

Purchaser: \$

LOT 7 PERTANGUS GRIMWADE G288

CALVED: 30/10/2011

IDENT: VGGG288

GENETIC STATUS: AMFU, NHFU, CAFU, DDF

SITZ NEW DESIGN 458N USA14474596

Sire: **PERTANGUS E66(AI) VGGG66**
ERTANGUS Z85(AI) VGGZ85

GARDENS HIGHMARK USA13047487

Dam: **PERTANGUS HIGHMARK B59(AI) VGGB59**
PERTANGUS X176(AI) VGGX176

Comments: Well balanced bull with low birth weight & good calving ease. Has balanced EBVs across the board. Low birth weight bull could be used with heifers. Last of the 2 year old Angus bulls in the sale.

TRAITS OBSERVED: BWT,200WT,600WT(X2),SS,FAT,EMA,IMF



SEPTEMBER 2012 ANGUS AUSTRALIA BREEDPLAN

	CED	CEM	GL	BW	200D	400D	600D	MCW	MILK	SS	DTC	CWT	EMA	RIB	RUMP	RBY	IMF		
	+1.6	-1.0	-4.9	+2.8	+41	+78	+95	+77	+16	+2.2	-4.9	+56	+4.6	+0.1	+0.4	+0.2	+1.7		
	44%	39%	50%	78%	69%	66%	69%	60%	46%	71%	36%	58%	50%	54%	55%	48%	44%		
\$ INDEX VALUES	LONG FED			+\$108			HEAVY GRASS FED			+\$84			SHORT FED		+\$77		TERMINAL		+\$70

Purchaser: \$

LOT 8 ASCOT HALLMARK H1

CALVED: 10/02/2012

IDENT: QQFH1

GENETIC STATUS: AMFU, NHFU, CAFU, DDC

ARDROSSAN ADMIRAL A2(AI)(ET) NAQA2

Sire: **KANSAS DARWIN D66(AI) NKLD66**
KANSAS FARMERS DAUGHTER A69 NKLA69

BON VIEW NEW DESIGN 1407 USA1407

Dam: **KANSAS ANNIE Y66(AI)(ET) NKLY66**
AMAROO EXPO ANNIE U024(AI)(ET) BYEU024

Comments: Top 5 % EMA & Retail Beef Yield. Top 20% Calving Ease. Yearling bull out of a good Kansas cow & by Kansas Darwin - a bull that is breeding well at the Kansas stud. Has good length & bone. Could suit use with heifers with low birth weight EBVs.

TRAITS OBSERVED: BWT,200WT,400WT,600WT,SS,FAT,EMA,IMF



SEPTEMBER 2012 ANGUS AUSTRALIA BREEDPLAN

	CED	CEM	GL	BW	200D	400D	600D	MCW	MILK	SS	DTC	CWT	EMA	RIB	RUMP	RBY	IMF		
	+1.6	-1.4	-2.9	+3.6	+40	+71	+94	+75	+15	-0.7	-2.7	+57	+7.3	-1.5	-1.4	+1.8	+1.8		
	44%	39%	51%	77%	68%	69%	70%	62%	47%	72%	38%	60%	53%	58%	60%	52%	48%		
\$ INDEX VALUES	LONG FED			+\$117			HEAVY GRASS FED			+\$90			SHORT FED		+\$77		TERMINAL		+\$79

Purchaser: \$

LOT 9 ASCOT EMPORER H161 (AI)

CALVED: 21/07/2012

IDENT: QQFH161

GENETIC STATUS: AMFU, NHFU, CAFU, DDF

TE MANIA BERKLEY B1(AI) VTMB1

Sire: **TE MANIA EMPEROR E343(AI) VTME343**
B T ULTRAVOX 297E USA297E

MILLAH MURRAH C113(AI) NMMC113

Dam: **MILLAH MURRAH BRENDA F218 NMMF218**
MILLAH MURRAH C61(AI) NMMC61

Comments: Top 5% 200, 400, 600D wt & Grass Fed Index. First of the bulls from our Millah Murrah females, by the \$91,000 Te Mania Emperor bull. Great combination & has possible STUD SIRE potential. Bulls by Emperor at the Millah Murrah sale averaged over \$10,000.00 Your chance to possibly get similar bulls at a fraction of this.

TRAITS OBSERVED: BWT,200WT,400WT,SS,FAT,EMA,IMF



SEPTEMBER 2012 ANGUS AUSTRALIA BREEDPLAN

	CED	CEM	GL	BW	200D	400D	600D	MCW	MILK	SS	DTC	CWT	EMA	RIB	RUMP	RBY	IMF		
	+0.3	+1.7	-4.8	+6.2	+51	+97	+123	+131	+14	+1.5	-	+69	+5.8	-0.1	0.0	+0.9	+2.0		
	46%	38%	59%	77%	71%	71%	68%	61%	41%	75%	-	61%	54%	61%	62%	53%	49%		
\$ INDEX VALUES	LONG FED			+\$127			HEAVY GRASS FED			+\$105			SHORT FED		+\$91		TERMINAL		+\$93

Purchaser: \$

LOT 10 ASCOT EMPEROR H160 (AI)

CALVED: 14/07/2012

IDENT: QQFH160

GENETIC STATUS: AMFU, NHFU, CAFU, DDF

TE MANIA BERKLEY B1(AI) VTMB1

Sire: **TE MANIA EMPEROR E343(AI) VTME343**

TE MANIA LOWAN Z74(AI)(ET) VTMZ74

BT RIGHT TIME 24J USA24J

Dam: **MILLAH MURRAH FLOWER F217(AI) NMMF217**

MILLAH MURRAH FLOWER Y11(AI)(ET) NMMY11

Comments: Top 1% for 200, 400 & 600D wts, Carcass wt, Grass Fed & Short Fed Indexes. Another stand out yearling bull out of one of our new Millah Murrah females, again by Te Mania Emperor. The Emperor calves have been very consistent for us. These are the type of bulls we are trying to breed. This bull has balanced EBVs. Like Lot 9 he is great for early finishing on grass or grain.

TRAITS OBSERVED: BWT,200WT,400WT,SS,FAT,EMA,IMF



SEPTEMBER 2012 ANGUS AUSTRALIA BREEDPLAN

ANGUS	CED	CEM	GL	BW	200D	400D	600D	MCW	MILK	SS	DTC	CWT	EMA	RIB	RUMP	RBY	IMF
	+1.0	+1.1	-5.0	+5.9	+57	+102	+129	+124	+18	-0.9	-4.3	+76	+5.2	+0.5	-0.5	+0.6	+2.0
	50%	43%	62%	77%	72%	72%	69%	60%	45%	76%	36%	62%	56%	62%	63%	55%	52%

\$ INDEX VALUES	LONG FED	HEAVY GRASS FED	SHORT FED	TERMINAL
	+\$132	+\$105	+\$94	+\$94

Purchaser: \$

LOT 11 ASCOT HEAVY-HITTER H56

CALVED: 15/08/2012

IDENT: QQFH56

GENETIC STATUS: AMFU, NHFU, CAFU, DDF

CARABAR BOLLON DIRECTION W109 B35(AI)(ET) QHEB35

Sire: **CARABAR DIRECTION B35 E52(AI) QHEE52**

CARABAR HEATHER C5(AI)(ET) QHEC5

YTHANBRAE HENRY VIII U8(AI)(ET) VLYU8

Dam: **FORRES QUITA A101(AI)(ET) NFJA101**

GLEN ARM QUITA Q26 VVRQ26

Comments: Top 5 % 200, 400, 600D & Carcass wts. This bull is out of one of our donor cows, by the Brisbane Royal Interbreed Champion Bull - Carabah Direction - one of our stud sires. A real sirey type with good neck extension, very slick skin type & body length. Not to be missed.

TRAITS OBSERVED: BWT,200WT,400WT,SS,FAT,EMA,IMF



SEPTEMBER 2012 ANGUS AUSTRALIA BREEDPLAN

ANGUS	CED	CEM	GL	BW	200D	400D	600D	MCW	MILK	SS	DTC	CWT	EMA	RIB	RUMP	RBY	IMF
	-1.5	-0.1	-3.4	+6.1	+52	+93	+125	+122	+11	+2.6	-	+74	+6.2	-1.2	-0.9	+1.2	+1.5
	41%	35%	50%	77%	69%	68%	65%	56%	43%	72%	-	57%	49%	53%	55%	48%	43%

\$ INDEX VALUES	LONG FED	HEAVY GRASS FED	SHORT FED	TERMINAL
	+\$122	+\$103	+\$85	+\$95

Purchaser: \$

LOT 12 ASCOT HERDMASTER H157 (AI)

CALVED: 19/07/2012

IDENT: QQFH157

GENETIC STATUS: AMFU, NHFU, CAFU, DDC

BT EQUATOR 395M USA14237157

Sire: **MILLAH MURRAH EQUATOR D78(AI) NMMD78**

MILLAH MURRAH RADO Y119(AI) NMMY119

CARRINGTON PARK TIME ON B7(AI) CFQB7

Dam: **MILLAH MURRAH BRENDA F200(AI)(ET) NMMF200**

MILLAH MURRAH BRENDA Y33(AI) NMMY33

Comments: Top 1% 200, 400, 600D Wts, Carcass Wt, Grass Fed, Short Fed & Terminal Indexes. Top 5% Scrotal Size, EMA, RBY & Long Fed index. Will mature to a larger frame bull with plenty of leg & mobility & still maintaining good carcass qualities. One of our pick bulls. One of the heaviest bull for age in the sale. By Millah Murrah D78 - The highest growth sire in the breed.

TRAITS OBSERVED: BWT,200WT,400WT,SS,FAT,EMA,IMF



SEPTEMBER 2012 ANGUS AUSTRALIA BREEDPLAN

ANGUS	CED	CEM	GL	BW	200D	400D	600D	MCW	MILK	SS	DTC	CWT	EMA	RIB	RUMP	RBY	IMF
	-2.9	+0.9	-4.9	+7.2	+60	+111	+141	+125	+21	+2.6	-	+84	+6.2	-2.1	-2.6	+2.0	+0.9
	47%	41%	61%	77%	72%	72%	69%	63%	53%	76%	-	62%	55%	62%	63%	55%	51%

\$ INDEX VALUES	LONG FED	HEAVY GRASS FED	SHORT FED	TERMINAL
	+\$128	+\$117	+\$104	+\$106

Purchaser: \$

LOT 13 ASCOT EVIDENT H146 (AI)

CALVED: 15/07/2012

IDENT: QQFH146

GENETIC STATUS: AMFU, NHFU, CAFU, DDF

TE MANIA BARTEL B219(AI)(ET) VTMB219

Sire: **DUNOON EVIDENT E614(AI)(ET) BHRE614**
DUNOON ELSA B681 BHRB681

MILLAH MURRAH EQUATOR D78(AI) NMMMD78

Dam: **MILLAH MURRAH ABIGAIL F116(AI) NMMF116**
MILLAH MURRAH C40(AI) NMMC40

Comments: *STUD SIRE POTENTIAL!! A non carrier son of the great Dunoon Evident AI sire. A good all round deep, thick bull, with an exceptional temperament. Top 1% 200, 400, 600D Wts, Carcass Wt, Grass Fed, Short Fed & Terminal Indexes. Top 5% Scrotal Size, EMA, RBY & Long Fed Index. A bull that is structurally very correct with near perfect feet. QUARTER SEMEN SHARE RETAINED IN THIS BULL. One of our pick bulls in the sale. Go to www.ascotcattle.com.au to view a video of this bull*

TRAITS OBSERVED: BWT,200WT,400WT,SS,FAT,EMA,IMF



SEPTEMBER 2012 ANGUS AUSTRALIA BREEDPLAN

	CED	CEM	GL	BW	200D	400D	600D	MCW	MILK	SS	DTC	CWT	EMA	RIB	RUMP	RBY	IMF		
	-3.9	0.0	-3.2	+5.4	+55	+101	+126	+107	+15	+3.0	-	+83	+8.3	-0.4	-1.0	+1.5	+2.0		
	46%	36%	62%	77%	71%	72%	68%	60%	40%	75%	-	61%	53%	61%	62%	53%	49%		
\$ INDEX VALUES	LONG FED			+\$135			HEAVY GRASS FED			+\$108			SHORT FED		+\$96		TERMINAL		+\$99

Purchaser: \$

LOT 14 ASCOT BARTEL H65 (APR) (AI)

CALVED: 21/08/2012

IDENT: QQFH65

GENETIC STATUS: AMFU, NHFU, CAFU, DDF

TE MANIA BARTEL B219(AI)(ET) VTMB219

Sire: **AYRVALE BARTEL E7(AI)(ET) HIOE7**
EAGLEHAWK JEDDA B32(AI) BVVB32

TE MANIA WARRIOR W190(AI)(ET) VTMW190

Dam: **ASCOT A293(APR) QQFA293**

Comments: *Top 10% EMA, IMF & Long Fed Index. Top 15% Calving Ease. Top 20% Rump Fat, Scrotal Size & Short Fed Index. An Ayrvale Bartel E7 son that we like, long, soft & well balanced. Lower birth weight EBVs indicate could also be used on heifers.*

TRAITS OBSERVED: GL,BWT,200WT,400WT,SS,FAT,EMA,IMF



SEPTEMBER 2012 ANGUS AUSTRALIA BREEDPLAN

	CED	CEM	GL	BW	200D	400D	600D	MCW	MILK	SS	DTC	CWT	EMA	RIB	RUMP	RBY	IMF		
	+2.1	-	-3.2	+3.6	+38	+75	+90	-	-	+2.2	-	+55	+7.3	+0.5	+0.7	+0.7	+2.6		
	42%	-	65%	76%	70%	70%	64%	-	-	74%	-	57%	50%	56%	58%	49%	45%		
\$ INDEX VALUES	LONG FED			+\$128			HEAVY GRASS FED			+\$90			SHORT FED		+\$81		TERMINAL		+\$74

Purchaser: \$

LOT 15 ASCOT DOC H158

CALVED: 27/08/2012

IDENT: QQFH158

GENETIC STATUS: AMFU, NHFU, CAFU, DDF

MILLAH MURRAH EQUATOR D78(AI) NMMMD78

Sire: **MILLAH MURRAH DOC F159(AI) NMMF159**
HAZELDEAN Y275(AI) NHZY275

BT RIGHT TIME 24J USA24J

Dam: **MILLAH MURRAH ABIGAIL F205(AI) NMMF205**
MILLAH MURRAH ABIGAIL B17(AI) NMMB17

Comments: *Top 10% 600D wt & Milk. Top 15% Rib Fat. Top 20% 200 & 400D Wts. Another Bull from one of our Millah Murrah breeders. Very easy doing bull.*

TRAITS OBSERVED: WT,200WT,400WT,SS,FAT,EMA,IMF



SEPTEMBER 2012 ANGUS AUSTRALIA BREEDPLAN

	CED	CEM	GL	BW	200D	400D	600D	MCW	MILK	SS	DTC	CWT	EMA	RIB	RUMP	RBY	IMF		
	-0.6	+0.8	-4.0	+4.5	+45	+83	+107	+97	+17	+1.3	-	+59	+3.3	+0.7	+0.5	-0.1	+1.4		
	42%	37%	55%	76%	69%	68%	65%	57%	42%	73%	-	57%	50%	55%	57%	49%	44%		
\$ INDEX VALUES	LONG FED			+\$104			HEAVY GRASS FED			+\$84			SHORT FED		+\$74		TERMINAL		+\$75

Purchaser: \$

LOT 16 ASCOT HAWTHORN H76

CALVED: 15/08/2012

IDENT: QQFH76

GENETIC STATUS: AMFU, NHFU, CAFU, DDF

CARABAR BOLLON DIRECTION W109 B35(AI)(ET) QHEB35

Sire: **CARABAR DIRECTION B35 E52(AI) QHEE52**

CARABAR HEATHER C5(AI)(ET) QHEC5

MYTTY IN FOCUS USA13880818

Dam: **FORRES BURNETTE C13(AI)(ET) NFJC13**

FORRES BURNETTE A4(AI)(ET) NFJA4

Comments: Top 1% Scrotal Size. Top 5% 200, 400, 600D & Carcass Wts, Grass Fed, Short Fed & Terminal Indexes. Top 10% Calving Ease & Long Fed Index. Top 20% EMA, Rump, Fat & IMF. By the Interbreed Champion Bull - Carabar Direction. He is a slick coated bull & has extra length.

TRAITS OBSERVED: BWT,200WT,400WT,SS,FAT,EMA,IMF



SEPTEMBER 2012 ANGUS AUSTRALIA BREEDPLAN

	CED	CEM	GL	BW	200D	400D	600D	MCW	MILK	SS	DTC	CWT	EMA	RIB	RUMP	RBY	IMF
	+2.2	+1.4	-	+6.0	+52	+91	+119	+109	-	+4.3	-	+66	+5.8	+0.4	+0.6	+0.3	+1.9
	40%	35%	-	76%	68%	68%	64%	55%	-	72%	-	57%	49%	54%	56%	49%	44%

\$ INDEX VALUES	LONG FED	HEAVY GRASS FED	SHORT FED	TERMINAL
	+\$131	+\$105	+\$89	+\$88

Purchaser: \$

LOT 17 ASCOT HERMITAGE H78 (AI)

CALVED: 01/09/2012

IDENT: QQFH78

GENETIC STATUS: AMFU, NHFU, CAFU, DDF

TE MANIA YORKSHIRE Y437(AI) VTM437

Sire: **TE MANIA BERKLEY B1(AI) VTMB1**

TE MANIA LOWAN Z53(AI)(ET) VTMZ53

BOYD ON TARGET 1083 USA13828202

Dam: **KANSAS TARIKU D93(AI)(ET) NKLD93**

KANSAS TARIKU B7(AI) NKLB7

Comments: Top 1% Calving Ease Dtrs & GL. Top 5% Rib & Rump Fat. Top 10% 200D Wt, IMF & Calving Ease. Top 15% 400 & 600D Wts. Top 20% Long Fed Index. These positive fat EBV bull's progeny will fatten easily. By the \$65,000 Te Mania Berkley Bull, this bull is full of red meat with a moderate frame size. We really like the Berkley sons.

TRAITS OBSERVED: GL,BWT,200WT,400WT,SS,FAT,EMA,IMF



SEPTEMBER 2012 ANGUS AUSTRALIA BREEDPLAN

	CED	CEM	GL	BW	200D	400D	600D	MCW	MILK	SS	DTC	CWT	EMA	RIB	RUMP	RBY	IMF
	+2.6	+3.6	-7.6	+4.4	+48	+85	+106	+112	+8	+1.9	-5.5	+58	+4.0	+1.4	+1.9	-0.6	+2.3
	54%	50%	67%	77%	72%	72%	70%	65%	57%	75%	39%	63%	57%	62%	63%	56%	53%

\$ INDEX VALUES	LONG FED	HEAVY GRASS FED	SHORT FED	TERMINAL
	+\$117	+\$89	+\$77	+\$75

Purchaser: \$

LOT 18 ASCOT HEAVYWEIGHT H13 (APR)

CALVED: 29/07/2012

IDENT: QQFH13

GENETIC STATUS: AMFU, NHFU, CAFU, DDF

ARDROSSAN ADMIRAL A2(AI)(ET) NAQA2

Sire: **TEXAS ADMIRAL C405(AI) DXTC405**

TEXAS ROBIN Z013(AI) DXTZ013

Dam: **ASCOT U277(APR) QQFU277**

Comments: By the Texas bull Heavyweight is a soft easy-doing bull, with a slick coat. Above Breed Average for 200 & 400D wts, RBY & IMF.

TRAITS OBSERVED: BWT,200WT,400WT,SS,FAT,EMA,IMF



SEPTEMBER 2012 ANGUS AUSTRALIA BREEDPLAN

	CED	CEM	GL	BW	200D	400D	600D	MCW	MILK	SS	DTC	CWT	EMA	RIB	RUMP	RBY	IMF
	-	-	-	+4.9	+41	+73	+89	-	-	-0.4	-	+51	+3.8	-0.7	-1.4	+0.8	+1.5
	-	-	-	72%	63%	63%	59%	-	-	67%	-	51%	44%	49%	51%	43%	37%

\$ INDEX VALUES	LONG FED	HEAVY GRASS FED	SHORT FED	TERMINAL
	+\$86	+\$67	+\$62	+\$66

Purchaser: \$

LOT 19 ASCOT EMPEROR H57 (APR) (AI)

CALVED: 16/08/2012

IDENT: QQFH57

GENETIC STATUS: AMFU, NHFU, CAFU, DDF

TE MANIA BERKLEY B1(AI) VTMB1

Sire: **TE MANIA EMPEROR E343(AI) VTME343**

TE MANIA LOWAN Z74(AI)(ET) VTMZ74

Dam: **ASCOT Y955(APR) QQFY955**

Comments: By the \$91,000 Te Mania Emperor Sire. Another exceptional well-grown bull. Very good temperament. Top 15% Gestation Length. Top 20% Rib Fat & IMF.

TRAITS OBSERVED: GL,BWT,200WT,400WT,SS,FAT,EMA,IMF



SEPTEMBER 2012 ANGUS AUSTRALIA BREEDPLAN

	CED	CEM	GL	BW	200D	400D	600D	MCW	MILK	SS	DTC	CWT	EMA	RIB	RUMP	RBY	IMF
	+1.2	-	-4.9	+3.6	+40	+77	+91	-	-	+0.7	-	+54	+3.8	+0.6	+0.4	+0.3	+1.9
	41%	-	63%	75%	69%	68%	64%	-	-	73%	-	56%	48%	54%	56%	47%	43%
\$ INDEX VALUES	LONG FED		+\$99		HEAVY GRASS FED		+\$77		SHORT FED		+\$71		TERMINAL		+\$67		

Purchaser: \$

LOT 20 ASCOT THEO H149 (AI)

CALVED: 15/07/2012

IDENT: QQFH149

GENETIC STATUS: AMFU, NHFU, CAFU, DDF

B/R NEW DESIGN 036 USA036

Sire: **BOOROOMOOKA THEO T030(AI) NGMT30**

BOOROOMOOKA QUAIN T Q34 NGMQ34

MILLAH MURRAH EQUATOR D78(AI) NMMD78

Dam: **MILLAH MURRAH FLOWER F127(AI)(ET) NMMF127**

MILLAH MURRAH FLOWER A70(AI)(ET) NMMA70

Comments: Top 5% Rib & Rump Fat & Milk. Top 10% Calving Ease. Top 15% EMA. Top 20% IMF & Long Fed Index. A Millah Murrah Bred bull by Booroomooka Theo - a bull that breeds good females. He has high EMA & Fat EBVs. A great combination. Could be used for heifers.

TRAITS OBSERVED: BWT,200WT,400WT,SS,FAT,EMA,IMF



SEPTEMBER 2012 ANGUS AUSTRALIA BREEDPLAN

	CED	CEM	GL	BW	200D	400D	600D	MCW	MILK	SS	DTC	CWT	EMA	RIB	RUMP	RBY	IMF
	+2.8	+1.9	-4.6	+2.2	+36	+69	+94	+74	+19	+1.6	-4.3	+54	+6.2	+1.7	+1.8	0.0	+2.0
	55%	53%	61%	77%	71%	72%	69%	66%	58%	76%	52%	65%	61%	65%	66%	61%	58%
\$ INDEX VALUES	LONG FED		+\$119		HEAVY GRASS FED		+\$87		SHORT FED		+\$73		TERMINAL		+\$72		

Purchaser: \$

LOT 21 ASCOT HUNTSMAN H71 (APR) (AI)

CALVED: 24/08/2012

IDENT: QQFH71

GENETIC STATUS: AMFU, NHFU, CAFU, DDC

PAPA EQUATOR 2928 USA2928

Sire: **ARDROSSAN EQUATOR A241(AI)(ET) NAQA241**

ARDROSSAN PRINCESS W38(AI)(ET) NAQW38

Dam: **ASCOT Y935(APR) QQFY935**

Comments: Top 20% Retail Beef Yield. Above Breed Average for Scrotal Size. Carcass Wt & EMA. He is the only Ardrossan Equator Bull in the sale. He has balance & good muscle & great carcass attributes. Don't miss this good commercially focused bull.

TRAITS OBSERVED: GL,BWT,200WT,400WT,SS,FAT,EMA,IMF



SEPTEMBER 2012 ANGUS AUSTRALIA BREEDPLAN

	CED	CEM	GL	BW	200D	400D	600D	MCW	MILK	SS	DTC	CWT	EMA	RIB	RUMP	RBY	IMF
	-1.6	-0.2	-2.7	+4.4	+37	+73	+91	+92	+7	+1.7	-	+56	+5.0	-0.2	-0.2	+1.0	+1.3
	47%	42%	63%	75%	69%	69%	65%	57%	51%	73%	-	58%	52%	56%	58%	51%	47%
\$ INDEX VALUES	LONG FED		+\$90		HEAVY GRASS FED		+\$76		SHORT FED		+\$66		TERMINAL		+\$71		

Purchaser: \$

LOT 22 ASCOT HUMMER H77 (APR) (AI)

CALVED: 29/08/2012

IDENT: QQFH77

GENETIC STATUS: AMFU, NHFU, CAFU, DDF

TE MANIA BARTEL B219(AI)(ET) VTMB219

Sire: AYRVALE BARTEL E7(AI)(ET) HIOE7

EAGLEHAWK JEDDA B32(AI) BVVB32

Dam: ASCOT Z323(APR) QQFZ323

Comments: Top 10% EMA, Scrotal & Rib Fat. Top 20% 400D Wt, Rump Fat, IMF & Short Fed Index. A very well-grown bull. Good length & bone. By one of the top indexing bulls - Ayrvale Bartel E7. A good combination with our easy-doing, strong boned breeders. Good bull. Good temperament.

TRAITS OBSERVED: GL,BWT,200WT,400WT,SS,FAT,EMA,IMF



SEPTEMBER 2012 ANGUS AUSTRALIA BREEDPLAN

	CED	CEM	GL	BW	200D	400D	600D	MCW	MILK	SS	DTC	CWT	EMA	RIB	RUMP	RBY	IMF
	-0.4	-	-2.0	+5.8	+43	+83	+98	-	-	+2.3	-	+58	+6.7	+1.0	+0.6	+0.8	+1.9
	39%	-	63%	75%	68%	68%	62%	-	-	73%	-	54%	47%	53%	55%	46%	42%

\$ INDEX VALUES	LONG FED	HEAVY GRASS FED	SHORT FED	TERMINAL
	+\$114	+\$89	+\$82	+\$78

Purchaser: \$

LOT 23 ASCOT EMPEROR H59 (APR) (AI)

CALVED: 17/08/2012

IDENT: QQFH59

GENETIC STATUS: AMFU, NHFU, CAFU, DDF

TE MANIA BERKLEY B1(AI) VTMB1

Sire: TE MANIA EMPEROR E343(AI) VTME343

TE MANIA LOWAN Z74(AI)(ET) VTMZ74

Dam: ASCOT Y328(APR) QQFY328

Comments: Top 20% Retail Beef Yield. Above Breed Average for 200, 400, 600D & Carcass Wts, EMA, IMF & All Indexes. Another Emperor son we like a lot. Slick-coated. The Emperor bulls are so consistent.

TRAITS OBSERVED: GL,BWT,200WT,400WT,SS,FAT,EMA,IMF



SEPTEMBER 2012 ANGUS AUSTRALIA BREEDPLAN

	CED	CEM	GL	BW	200D	400D	600D	MCW	MILK	SS	DTC	CWT	EMA	RIB	RUMP	RBY	IMF
	+0.1	-	-4.4	+4.9	+41	+78	+95	-	-	+1.3	-	+56	+4.8	-0.2	-1.1	+1.2	+1.5
	40%	-	63%	75%	69%	68%	64%	-	-	73%	-	55%	49%	54%	55%	47%	42%

\$ INDEX VALUES	LONG FED	HEAVY GRASS FED	SHORT FED	TERMINAL
	+\$97	+\$82	+\$74	+\$74

Purchaser: \$

LOT 24 ASCOT HEYDAY H70 (APR) (AI)

CALVED: 23/08/2012

IDENT: QQFH70

GENETIC STATUS: AMFU, NHFU, CAFU, DDF

TE MANIA BARTEL B219(AI)(ET) VTMB219

Sire: AYRVALE BARTEL E7(AI)(ET) HIOE7

EAGLEHAWK JEDDA B32(AI) BVVB32

Dam: ASCOT X321(APR) QQFX321

Comments: Top 5% Rib Fat. Top 10% EMA, IMF & Rump Fat. Top 20% Calving Ease. Good all round bull with a good carcass, by the trait-leading sire - Ayrvale Bartel E7. Exceptionally good temperament. Could suit heifers or cows. Has a good balance of EMA & fat EBVs.

TRAITS OBSERVED: GL,BWT,200WT,400WT,SS,FAT,EMA,IMF



SEPTEMBER 2012 ANGUS AUSTRALIA BREEDPLAN

	CED	CEM	GL	BW	200D	400D	600D	MCW	MILK	SS	DTC	CWT	EMA	RIB	RUMP	RBY	IMF
	+1.8	-	-2.9	+3.3	+36	+75	+88	-	-	+1.1	-	+54	+6.4	+1.5	+1.1	+0.3	+2.2
	39%	-	63%	75%	68%	68%	62%	-	-	73%	-	54%	47%	53%	55%	46%	42%

\$ INDEX VALUES	LONG FED	HEAVY GRASS FED	SHORT FED	TERMINAL
	+\$113	+\$81	+\$76	+\$69

Purchaser: \$





LOT 25 ASCOT H72 (APR) (AI)

CALVED: 25/08/2012

IDENT: QQFH72

GENETIC STATUS: AMFU, NHFU, CAF, DDF

BOOROOMOOKA UNDERTAKEN Y145 NGMY145

Sire: **RENNYLEA EDMUND E11(AI)(ET) NORE11**
LAWSONS HENRY VIII Y5(AI) VLYY5

TE MANIA WARRIOR W190(AI)(ET) VTMW190

Dam: **ASCOT B336(APR) QQFB336**

Comments: Top 5% Rib & Rump Fats & IMF. Top 10% Scrotal Size. An extra soft, well balanced bull by RennyLea Edmund E11. Positive fat bull.



TRAITS OBSERVED: GL,BWT,200WT,400WT,SS,FAT,EMA,IMF

SEPTEMBER 2012 ANGUS AUSTRALIA BREEDPLAN

	CED	CEM	GL	BW	200D	400D	600D	MCW	MILK	SS	DTC	CWT	EMA	RIB	RUMP	RBY	IMF		
	-1.5	+0.4	-2.9	+5.6	+37	+68	+81	+70	+7	+2.5	-	+41	+3.4	+1.4	+1.4	-0.7	+2.8		
	42%	35%	65%	76%	71%	70%	66%	58%	41%	74%	-	59%	51%	57%	58%	50%	46%		
\$ INDEX VALUES	LONG FED			+\$106			HEAVY GRASS FED			+\$66			SHORT FED		+\$60		TERMINAL		+\$58

Purchaser: \$

LOT 26 ASCOT HERRINGBONE H18 (APR)

CALVED: 06/08/2012

IDENT: QQFH18

GENETIC STATUS: AMFU, NHFU, CAFU, DDF

ARDROSSAN ADMIRAL A2(AI)(ET) NAQA2

Sire: **TEXAS ADMIRAL C405(AI) DXTC405**
TEXAS ROBIN Z013(AI) DXTZ013

Dam: **ASCOT U305(APR) QQFU305**

Comments: Top 15% Retail Beef Yield. Above Breed Average 200, 400 & 600D Wts & IMF. Quiet, soft bull & an Ardrossan Admiral grandson.



TRAITS OBSERVED: BWT,200WT,400WT,SS,FAT,EMA,IMF

SEPTEMBER 2012 ANGUS AUSTRALIA BREEDPLAN

	CED	CEM	GL	BW	200D	400D	600D	MCW	MILK	SS	DTC	CWT	EMA	RIB	RUMP	RBY	IMF		
	-	-	-	+5.7	+43	+76	+94	-	-	0.0	-	+53	+4.0	-0.8	-1.6	+1.0	+1.3		
	-	-	-	72%	63%	63%	59%	-	-	67%	-	51%	44%	49%	51%	43%	37%		
\$ INDEX VALUES	LONG FED			+\$87			HEAVY GRASS FED			+\$71			SHORT FED		+\$64		TERMINAL		+\$70

Purchaser: \$

LOT 27 ASCOT HERO H152 (AI)

CALVED: 01/08/2012

IDENT: QQFH152

GENETIC STATUS: AMFU, NHFU, CAFU, DDF

TE MANIA BARTEL B219(AI)(ET) VTMB219

Sire: **DUNOON EVIDENT E614(AI)(ET) BHRE614**
DUNOON ELSA B681 BHRB681

MILLAH MURRAH EQUATOR D78(AI) NMMD78

Dam: **MILLAH MURRAH HONEY F166(AI) NMMF166**
MILLAH MURRAH C102(AI) NMMC102

Comments: Top 1% 200D & Carcass Wts & Terminal Index. Top 5% 400 & 600D Wts, EMA & Grass Fed Index. Top 10% Scrotal Size, RBY, Long & Short Fed Indexes. Above Breed Average for IMF Rib Fat & GL. Exceptionally quiet bull with good carcass. Soft & deep by one of our new generation Millah Murrah heifers.



TRAITS OBSERVED: BWT,200WT,400WT,SS,FAT,EMA,IMF

SEPTEMBER 2012 ANGUS AUSTRALIA BREEDPLAN

	CED	CEM	GL	BW	200D	400D	600D	MCW	MILK	SS	DTC	CWT	EMA	RIB	RUMP	RBY	IMF		
	-3.0	+0.2	-3.6	+5.1	+52	+92	+120	+109	-	+2.3	-	+75	+7.6	0.0	-0.8	+1.4	+1.8		
	45%	35%	62%	77%	71%	72%	68%	60%	-	75%	-	61%	53%	60%	62%	53%	49%		
\$ INDEX VALUES	LONG FED			+\$126			HEAVY GRASS FED			+\$103			SHORT FED		+\$88		TERMINAL		+\$94

Purchaser: \$

LOT 28 ASCOT DYNAMITE H62 (APR) (AI)

CALVED: 19/08/2012

IDENT: QQFH62

GENETIC STATUS: AMFU, NHFU, CAFU, DDF

BALDRIDGE KABOOM K243 KCF USA13987017

Sire: **MOHNEN DYNAMITE 1356 USA15585939**
MOHNEN JILT 910 USA13620692

Dam: ASCOT W297(APR) QQFW297

Comments: Top 5% for Scrotal Size. Above Breed Average for Rib & Rump Fats. A good bodied commercial bull by U.S. Sire - Mohnen Dynamite.

TRAITS OBSERVED: BWT,200WT,400WT,SS,FAT,EMA,IMF



SEPTEMBER 2012 ANGUS AUSTRALIA BREEDPLAN

	CED	CEM	GL	BW	200D	400D	600D	MCW	MILK	SS	DTC	CWT	EMA	RIB	RUMP	RBY	IMF		
	-0.6	-1.8	-3.7	+3.9	+32	+71	+87	+89	+2	+2.8	-	+46	+3.4	+0.1	0.0	+0.5	+0.5		
	44%	39%	63%	75%	68%	68%	64%	56%	49%	73%	-	57%	51%	55%	56%	49%	45%		
\$ INDEX VALUES	LONG FED			+\$71			HEAVY GRASS FED			+\$69			SHORT FED		+\$60		TERMINAL		+\$63

Purchaser: \$

LOT 29 ASCOT HORATIO H54 (APR)

CALVED: 11/08/2012

IDENT: QQFH54

GENETIC STATUS: AMFU, NHFU, CAFU, DDF

CARABAR BOLLON DIRECTION W109 B35(AI)(ET) QHEB35

Sire: **CARABAR DIRECTION B35 E52(AI) QHEE52**
CARABAR HEATHER C5(AI)(ET) QHEC5

BURENDA YELLOWSTONE Y4(AI)(ET) QBUY4

Dam: **BURENDA CATHERINE C11(APR)(AI) QBUC11**
BURENDA TRICK X5(APR)(AI)(ET) QBUX5

Comments: Top 15% for Scrotal Size. Top 20% 600D Wt. Top 25% 200D & Carcass Wts. Above Breed Average for Rib & Rump Fats, IMF, EMA, 400D Wt, Calving Ease & All Indexes. This bull is by the 2011 Interbreed Bull - Carabar Direction E52. He is one of our resident sires. Horatio is a well balanced commercial bull.

TRAITS OBSERVED: BWT,200WT,400WT,SS,FAT,EMA,IMF



SEPTEMBER 2012 ANGUS AUSTRALIA BREEDPLAN

	CED	CEM	GL	BW	200D	400D	600D	MCW	MILK	SS	DTC	CWT	EMA	RIB	RUMP	RBY	IMF		
	+1.1	-	-4.2	+4.6	+44	+79	+105	+100	+11	+2.2	-	+59	+4.6	+0.2	-0.1	+0.1	+1.7		
	37%	-	51%	77%	69%	68%	65%	57%	40%	73%	-	57%	49%	54%	56%	48%	42%		
\$ INDEX VALUES	LONG FED			+\$111			HEAVY GRASS FED			+\$86			SHORT FED		+\$72		TERMINAL		+\$76

Purchaser: \$

LOT 30 ASCOT EMPEROR H21 (APR) (AI)

CALVED: 20/08/2012

IDENT: QQFH21

GENETIC STATUS: AMFU, NHFU, CAF, DDF

TE MANIA BERKLEY B1(AI) VTMB1

Sire: **TE MANIA EMPEROR E343(AI) VTME343**
TE MANIA LOWAN Z74(AI)(ET) VTMZ74

Dam: ASCOT B327(APR) QQFB327

Comments: Top 5% for Lower Birth Wt. Top 10% for Calving Ease & Scrotal Size. Top 20% Retail Beef Yield. Above breed average for IMF & EMA. Could suit heifers or cows with low birth weight EBVs. Another well balanced bull by the \$91,000 Te Mania Emperor bull to finish off the Angus.

TRAITS OBSERVED: GL,BWT,200WT,400WT,SS,FAT,EMA,IMF



SEPTEMBER 2012 ANGUS AUSTRALIA BREEDPLAN

	CED	CEM	GL	BW	200D	400D	600D	MCW	MILK	SS	DTC	CWT	EMA	RIB	RUMP	RBY	IMF		
	+2.4	-	-4.0	+2.0	+32	+66	+80	-	-	+2.5	-	+50	+4.5	-0.1	-0.2	+1.0	+1.3		
	40%	-	63%	75%	68%	68%	64%	-	-	70%	-	55%	48%	54%	55%	47%	42%		
\$ INDEX VALUES	LONG FED			+\$88			HEAVY GRASS FED			+\$77			SHORT FED		+\$68		TERMINAL		+\$63

Purchaser: \$

Our team is as dedicated to Stud Stock as you are



Brian Wedemeyer
0409 694 696

Robert Murray
0419 644 813

Blake Munro
0428 862 469

Michael Smith
0428 541 711

Andrew Meara
0427 210 634

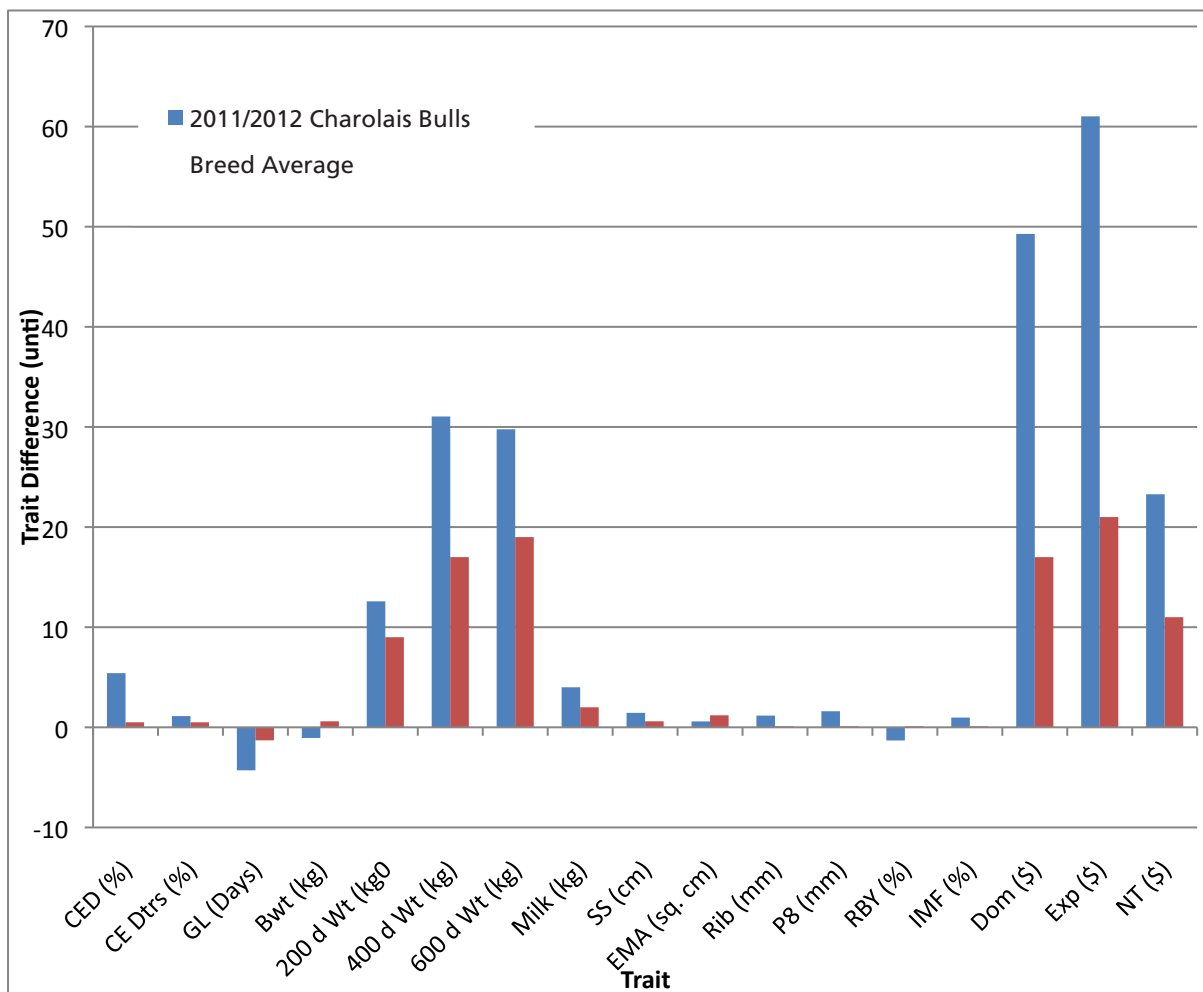
www.elders.com.au

Elders



CHAROLAIS CATTLE

LOTS 31 - 60





REFERENCE SIRE

HARVIE REDEMPTION 36P MC286641 (P) (R/F)

CALVED: 26/02/2004

TATTOO: OACZ6641E

COLOUR: Red fact

HORN: Polled

Sire: **LT WYOMING WIND 4020 PLD (P) OAUP4020E (P)**
 LT CHAP'S LADY 217 OP PED-2170E (H)

Dam: **HARVIE MS MOLSON 53M (P) PED-6280E (P)**
 HARVIE MISS FIREFLY 31F (P) PED-4926E (P)



TRAITS OBSERVED: BWT,200WT,400WT,600WT,SS,FAT,EMA,IMF

SEPTEMBER 2012 AUSTRALASIAN CHAROLAIS GROUP BREEDPLAN

	CED	CEM	GL	BW	200D	400D	600D	MCW	MILK	SS	DTC	CWT	EMA	RIB	RUMP	RBY	IMF	
	-5.1	-2.6	-1.7	+1.6	+20	+43	+46	+25	+1	+2.5	-	+27	-0.5	+2.0	+2.7	-1.4	+0.2	
	78%	66%	92%	93%	89%	90%	89%	84%	78%	86%	-	79%	67%	77%	76%	70%	66%	
\$ INDEX VALUES	DOMESTIC INDEX				+\$29			EXPORT INDEX			+\$38			NORTHERN TERMINAL INDEX			+\$20	

Purchaser: \$

REFERENCE SIRE

LT RIO BRAVO 3181 P M665507 (P)

CALVED: 17/03/2003

TATTOO: OAUW5507E

COLOUR: White

HORN: Polled

Sire: **LT RIO BLANCO 1234 P (P) OAUW591E (P)**
 LT PRAIRIE MAID 4054 PED-4694E (H)

Dam: **LT 7N OF DUKE 9083 PLD (P) OAUU2553E (P)**
 LT UNLIMITED PRO 1128 (P) PED-2370E (P)



TRAITS OBSERVED: BWT,200WT,400WT,600WT,SS,FAT,EMA,IMF

SEPTEMBER 2012 AUSTRALASIAN CHAROLAIS GROUP BREEDPLAN

	CED	CEM	GL	BW	200D	400D	600D	MCW	MILK	SS	DTC	CWT	EMA	RIB	RUMP	RBY	IMF	
	+13.4	+5.9	-8.6	-2.7	+23	+44	+59	+40	+18	+2.7	-	+34	+2.2	+1.7	+3.3	-1.7	+2.1	
	84%	75%	95%	96%	94%	95%	94%	90%	86%	94%	-	86%	79%	88%	87%	81%	79%	
\$ INDEX VALUES	DOMESTIC INDEX				+\$79			EXPORT INDEX			+\$106			NORTHERN TERMINAL INDEX			+\$46	

Purchaser: \$

REFERENCE SIRE

M6 GRID MAKER 104 PET M633377 (P)

CALVED: 01/01/2001

TATTOO: OAUW3377E

COLOUR: White

HORN: Polled

Sire: **WCR SIR TRADITION 066 PED-66E (H)**
 IDEAL 809 45 OF 25 PED-809E (H)

Dam: **VCR MISS MAC IV 317 PED-317E (H)**
 VCR MISS DUCHESS 113 PLD PED-113E (H)



TRAITS OBSERVED: BWT,200WT,400WT,600WT,SS,FAT,EMA,IMF

SEPTEMBER 2012 AUSTRALASIAN CHAROLAIS GROUP BREEDPLAN

	CED	CEM	GL	BW	200D	400D	600D	MCW	MILK	SS	DTC	CWT	EMA	RIB	RUMP	RBY	IMF	
	+10.2	+0.3	-11.4	-2.4	+11	+35	+56	+19	+23	+2.4	-	+39	+3.4	-0.5	-1.2	+1.8	-0.1	
	79%	69%	95%	94%	91%	92%	89%	85%	79%	88%	-	88%	78%	84%	86%	78%	82%	
\$ INDEX VALUES	DOMESTIC INDEX				+\$52			EXPORT INDEX			+\$72			NORTHERN TERMINAL INDEX			+\$41	

Purchaser: \$

REFERENCE SIRE

LT BLUEGRASS 4017P M686569 (P)

CALVED: 21/02/2004

TATTOO: OAUZ4017E

COLOUR: White

HORN: Polled

EATONS ASSERT 9171 PEDU9171F (H)
Sire: LT ASSERTION 1277 PEDW1277F (H)
 LT ALLIS CLASS 9140 PEDU9140F (H)

LT WYOMING WIND 4020 PLD (P) OAUP4020E (P)
Dam: LT PEARLS BREEZE 2236 PEDX2236F (H)
 LT UNLIMITED PEARL PEDS7053F (H)



SEPTEMBER 2012 AUSTRALASIAN CHAROLAIS GROUP BREEDPLAN

	CED	CEM	GL	BW	200D	400D	600D	MCW	MILK	SS	DTC	CWT	EMA	RIB	RUMP	RBY	IMF	
	+19.2	+8.6	-7.2	-3.3	+11	+10	-3	-10	+7	+2.0	-	+2	-0.2	+2.0	+2.9	-2.2	+0.9	
	92%	85%	98%	98%	97%	97%	97%	94%	93%	96%	-	90%	83%	91%	90%	85%	82%	
\$ INDEX VALUES	DOMESTIC INDEX				+\$52			EXPORT INDEX			+\$65			NORTHERN TERMINAL INDEX			+\$15	

Purchaser: \$

REFERENCE SIRE

NWMSU DOC SILVER 362 PLD M669488 (P)

CALVED: 07/03/2003

TATTOO: OAU9488E

COLOUR: White

HORN: Polled

EATONS PREDICTOR 9230 PEDJ9230E (D)
Sire: S\$ MONTANA SILVER M454024 (P) OAUR4024E (P)
 \$ STAGE'S MISS DC BAR (P) PED-1211E (P)

HCR FLASH 5074 POLLED M 252884 (P) OAUE5074E (P)
Dam: NWMSU DOLORES ET 0035 PED-8646E (H)
 BCR DOLORES 337 PLD PED-2541E (H)



SEPTEMBER 2012 AUSTRALASIAN CHAROLAIS GROUP BREEDPLAN

	CED	CEM	GL	BW	200D	400D	600D	MCW	MILK	SS	DTC	CWT	EMA	RIB	RUMP	RBY	IMF	
	+21.7	+11.7	-7.6	-5.4	+10	+40	+35	-6	+14	+2.4	-	+37	+2.0	+0.8	+1.1	-0.8	+1.1	
	72%	50%	92%	94%	90%	92%	89%	79%	66%	91%	-	77%	66%	79%	78%	70%	66%	
\$ INDEX VALUES	DOMESTIC INDEX				+\$89			EXPORT INDEX			+\$110			NORTHERN TERMINAL INDEX			+\$38	

Purchaser: \$

REFERENCE SIRE

PARINGA WESTERN SPUR D196 (AI) (ET) (P)

CALVED: 16/08/2008

TATTOO: TOLD196E

COLOUR: White

HORN: Polled

EATONS PREDICTOR 9230 PEDJ9230E (D)
Sire: LT WESTERN SPUR 2061 PLD M645785 (P) OAUX2061E (P)
 LT MAIDEN'S BREEZE 8242P (P) PEDT8242E (P)

FERNVALE TRAPPER FENT50E (H)
Dam: ROSDALE BOBBIN Y74 (P) MRY74E (P)
 ROSDALE BOBBIN U97 (P) MRU97E (P)



TRAITS OBSERVED: BWT,200WT,400WT,600WT,SS,FAT,EMA,IMF

SEPTEMBER 2012 AUSTRALASIAN CHAROLAIS GROUP BREEDPLAN

	CED	CEM	GL	BW	200D	400D	600D	MCW	MILK	SS	DTC	CWT	EMA	RIB	RUMP	RBY	IMF	
	+7.3	+8.2	-5.9	-1.4	+15	+34	+44	+37	+4	+2.8	-	+30	+0.9	+1.2	+2.5	-0.6	-0.6	
	70%	55%	93%	95%	92%	92%	92%	83%	67%	88%	-	90%	82%	86%	88%	79%	85%	
\$ INDEX VALUES	DOMESTIC INDEX				+\$54			EXPORT INDEX			+\$78			NORTHERN TERMINAL INDEX			+\$33	

Purchaser: \$

LOT 31 ASCOT GUINNESS G25E (AI) (P)

CALVED: 12/08/2011

TATTOO: JAJG25E

COLOUR: White

HORN: Polled

LT RIO BRAVO 3181 P M665507 (P) OAUY5507E (P)
Sire: PARINGA RIO BRAVO D213E (AI) (P) TOLD213E (P)
 PARINGA CIGAR B064 (AI) (ET) TOLB64E

KINDARA ACE (AI) K4PA28E (H)
Dam: GOBONGO SUSANE D178E GOD178E (D)
 GOBONGO SUSANE Z42E GOZ42E (D)

Comments: Top 5% Calving Ease, Rump Fat, IMF & all Indexes. Top 10% Rib Fat. Low Birth Weight. Super soft, positive fat, attractive bull with low birth weight EBVs to start the Charolais bulls.



TRAITS OBSERVED: GL,BWT,200WT,400WT,600WT(X2),SS,FAT,EMA,IMF

SEPTEMBER 2012 AUSTRALASIAN CHAROLAIS GROUP BREEDPLAN

	CED	CEM	GL	BW	200D	400D	600D	MCW	MILK	SS	DTC	CWT	EMA	RIB	RUMP	RBY	IMF
	+13.5	+1.0	-3.9	-2.2	+10	+19	+24	+15	+16	0.0	-	-	+1.9	+1.2	+2.3	-0.7	+1.0
	42%	35%	71%	69%	64%	66%	63%	61%	44%	72%	-	-	53%	55%	55%	53%	53%
\$ INDEX VALUES	DOMESTIC INDEX				+\$48			EXPORT INDEX			+\$61			NORTHERN TERMINAL INDEX		+\$28	

Purchaser: \$

LOT 32 ASCOT GRAND REDEMPTION G52E (AI) (P)

CALVED: 08/09/2011

TATTOO: JAJG52E

COLOUR: White

HORN: Polled



Scan the code to view a video of this bull



LT WYOMING WIND 4020 PLD (P) OAUP4020E (P)
Sire: HARVIE REDEMPTION 36P MC286641 (P) (R/F) OACZ6641E (P)
 HARVIE MS MOLSON 53M (P) PED-6280E (P)
 BALDRIDGE FASTTRACK 82E M447863 (P) OOUR82E (P)
Dam: GOBONGO JULIETTE B43E (AI) (P) GOB43E (P)
 GOBONGO JULIETTE Z15E GOZ15E (D)

Comments: Top 1% for 200, 400 & 600D Wts & scrotal circumference. Top 5% for Milk. Top 10% fat cover & all indexes. What a combination, bred by the Canadian champion bull x the Brisbane Royal Champion of Champions interbreed female. This bull has it all - good conformation, great temperament, Polled genes from sire & dam, super soft, good length & depth combined with a real sire's outlook. He has been a standout from a calf & was always heaviest in group from weaning onwards. Was used as a 14 month old in the herd we were so impressed with him & he has still recovered to be heaviest bull. His dam Gobongo Juliette a top donor cow in our herd is an incredibly roomy, easy doing polled cow with near perfect udder. She has free moving gait, tremendous depth of body & massive spring of rib, traits that have been passed on to her sons. Full brothers at Lots 45 & 50. We had to think long & hard to sell this bull. A quarter semen share is being retained in the bull with semen already collected. A great opportunity here not to be missed. **Scan the code or go to www.ascotcattle.com.au to view a video of this bull.**

TRAITS OBSERVED: GL,CE,BWT,200WT,400WT,600WT(X2),SS,FAT,EMA,IMF

SEPTEMBER 2012 AUSTRALASIAN CHAROLAIS GROUP BREEDPLAN

	CED	CEM	GL	BW	200D	400D	600D	MCW	MILK	SS	DTC	CWT	EMA	RIB	RUMP	RBY	IMF
	-0.5	+2.3	-2.5	+0.7	+23	+45	+57	-	+6	+2.9	-	-	-0.1	+1.2	+1.7	-1.0	+0.3
	47%	40%	73%	71%	65%	66%	63%	-	49%	73%	-	-	49%	52%	51%	51%	48%
\$ INDEX VALUES	DOMESTIC INDEX				+\$42			EXPORT INDEX			+\$60			NORTHERN TERMINAL INDEX		+\$29	

Purchaser: \$

LOT 33 ASCOT GOLDBAR G51E (AI) (P)

CALVED: 05/09/2011

TATTOO: JAJG51E

COLOUR: White

HORN: Polled

LT BLUEGRASS 4017P M686569 (P) OAUZ4017E (P)

Sire: **PARINGA MAX D101 (AI) (ET) (P/S) TOLD101E (S)**
PARINGA NEW TREND A81 AI (AI) TOLA81E

FERNVALE PRIME MOVER (AI) (ET) FENP25E (D)

Dam: **PALGROVE DIGIT 25 (P) PKU42E (P)**

PALGROVE DIGIT 12 (AI) (P) PKM29E (P)

Comments: Top 5% for Calving Ease, Scrotal Size & all indexes. Top 10% 600D Wt. Great balance, extra length & muscle with balanced EBVs. These good polled bulls are hard to breed & he presents a fantastic opportunity to secure one. Dam is a good Palgrove polled female by one of the top indexing bulls in the breed - Paringa Max.



TRAITS OBSERVED: GL,CE,BWT,200WT,600WT(X2),SS,FAT,EMA,IMF

SEPTEMBER 2012 AUSTRALASIAN CHAROLAIS GROUP BREEDPLAN

	CED	CEM	GL	BW	200D	400D	600D	MCW	MILK	SS	DTC	CWT	EMA	RIB	RUMP	RBY	IMF
	+11.5	+2.6	-4.6	-0.2	+14	+27	+44	+34	+10	+2.6	-	+23	+1.6	0.0	0.0	+0.3	+0.3
	48%	42%	74%	73%	69%	68%	72%	64%	53%	74%	-	60%	53%	57%	56%	55%	51%
\$ INDEX VALUES	DOMESTIC INDEX				+\$45			EXPORT INDEX			+\$67			NORTHERN TERMINAL INDEX			+\$32

Purchaser: \$

LOT 34 ASCOT GIBRALTAR G115E (AI) (ET) (P)

CALVED: 09/08/2011

TATTOO: JAJG115E

COLOUR: White

HORN: Polled

LT RIO BLANCO 1234 P (P) OAUW591E (P)

Sire: **LT RIO BRAVO 3181 P M665507 (P) OAU5507E (P)**

LT 7N OF DUKE 9083 PLD (P) OAUU2553E (P)

LT BLUEGRASS 4017P M686569 (P) OAUZ4017E (P)

Dam: **PARINGA BLUEGRASS D125 (AI) (ET) (P) TOLD125E (P)**

BRANCH VIEW MADONNA A106E (P) BVCA106E (P)

Comments: Top 1% IMF. Top 5% Scrotal, Rump Fat & all indexes. A real meat machine with great butt shape. These 2 year old bulls have predominately been prepared on crop & demonstrate the ability to grow & fatten on pasture. Huge 200 & 400D Wt EBVs as well as high fat EBVs are where we are heading with out program to allow quick finishing progeny. TESTED HOMOZYGOUS (90%) POLLED. Suit stud use & is by one of the highest ranking bulls in the breed Rio Bravo. Semen in this bull is no longer available. Rare opportunity to acquire a homozygous stud sire. He is one of our favourites in the 2 year old bulls. STUD SIRE POTENTIAL. Go to www.ascotcattle.com.au to view a video of this bull



TRAITS OBSERVED: BWT,200WT,400WT,600WT(X2),SS,FAT,EMA,IMF

SEPTEMBER 2012 AUSTRALASIAN CHAROLAIS GROUP BREEDPLAN

	CED	CEM	GL	BW	200D	400D	600D	MCW	MILK	SS	DTC	CWT	EMA	RIB	RUMP	RBY	IMF
	+4.4	+1.4	-6.2	+0.5	+25	+43	+58	+61	+9	+2.6	-	+30	+1.0	+1.0	+1.9	-1.3	+1.2
	53%	46%	60%	75%	69%	71%	74%	66%	53%	77%	-	64%	57%	61%	61%	60%	57%
\$ INDEX VALUES	DOMESTIC INDEX				+\$48			EXPORT INDEX			+\$68			NORTHERN TERMINAL INDEX			+\$34

Purchaser: \$

LOT 35 ASCOT GRANDEUR G174E (AI) (ET) (P)

CALVED: 01/09/2011

TATTOO: JAJG174E

COLOUR: White

HORN: Polled

S\$ MONTANA SILVER M454024 (P) OAU4024E (P)

Sire: **NWMSU DOC SILVER 362 PLD M669488 (P) OAU9488E (P)**

NWMSU DOLORES ET 0035 PED-8646E (H)

LT WYOMING WIND 4020 PLD (P) OAUP4020E (P)

Dam: **PARINGA WYOMING B34 (AI) (ET) (P) TOLB34E (P)**

COBRABALD SIXPENGE 2 ASHY51E (H)

Comments: Top 1% Scrotal & all indexes. Top 5% Calving Ease, 400, 600D & Carcass Wts & IMF. Top 10% Milk, Rump Fat & 200D Wt. Low birthweight. Half brother to our \$20,000 sale topping bull in last year's sale. This bull has a real sire's presence & one of the heaviest bulls. These bulls suit our early grass & grain fed program. This bull has huge scrotal, great length & depth & quiet natured as most of the are. TESTED HOMOZYGOUS (90%) POLLED. Would suit polled stud program. We like him a lot. His sire's semen is no longer available.



TRAITS OBSERVED: BWT,200WT,400WT,600WT,SS,FAT,EMA,IMF

SEPTEMBER 2012 AUSTRALASIAN CHAROLAIS GROUP BREEDPLAN

	CED	CEM	GL	BW	200D	400D	600D	MCW	MILK	SS	DTC	CWT	EMA	RIB	RUMP	RBY	IMF
	+12.0	+7.3	-5.4	-1.7	+17	+42	+55	+31	+11	+3.7	-	+36	+1.1	+0.9	+1.4	-0.9	+0.7
	47%	38%	59%	74%	66%	69%	71%	62%	45%	75%	-	60%	52%	56%	56%	55%	51%
\$ INDEX VALUES	DOMESTIC INDEX				+\$69			EXPORT INDEX			+\$97			NORTHERN TERMINAL INDEX			+\$39

Purchaser: \$

LOT 36 ASCOT GODFATHER G170E (AI) (ET) (P)

CALVED: 31/08/2011

TATTOO: JAJG170E

COLOUR: White

HORN: Polled

S\$ MONTANA SILVER M454024 (P) OAU4024E (P)

Sire: **NWMSU DOC SILVER 362 PLD M669488 (P) OAU9488E (P)**

NWMSU DOLORES ET 0035 PED-8646E (H)

FERNVALE TRAPPER FENT50E (H)

Dam: **ROSDALE BOBBIN Y74 (P) MRY74E (P)**

ROSDALE BOBBIN U97 (P) MRU97E (P)

Comments: Top 1% 400 & Carcass Wts & all indexes. One of the most balanced set of EBVs with positive EMA & Fats, all in the top 10%. Top 5% for Scrotal Size & 600D Wt. He has great neck extension, extra length & looks like a real sire should. By the no longer available Doc Silver & again out of the great Rosedale donor cow Y74. Hard to part with & very quiet. His sire, same as Lot 35 (Doc Silver) is the highest domestic index bull in the breed.

TRAITS OBSERVED: BWT,200WT,400WT,600WT(X2),SS,FAT,EMA,IMF



SEPTEMBER 2012 AUSTRALASIAN CHAROLAIS GROUP BREEDPLAN

	CED	CEM	GL	BW	200D	400D	600D	MCW	MILK	SS	DTC	CWT	EMA	RIB	RUMP	RBY	IMF
	+8.8	+4.1	-3.5	-0.7	+17	+46	+57	+38	+8	+2.3	-	+38	+2.5	+1.2	+1.8	-0.5	+0.6
	51%	40%	61%	75%	69%	71%	73%	65%	50%	77%	-	62%	55%	58%	58%	56%	54%
\$ INDEX VALUES	DOMESTIC INDEX				+\$65				EXPORT INDEX			+\$87			NORTHERN TERMINAL INDEX		+\$40

Purchaser: \$

LOT 37 ASCOT GUARDIAN G26E (AI) (P) (R/F)

CALVED: 13/08/2011

TATTOO: JAJG26E

COLOUR: Red Factor

HORN: Polled

LT WYOMING WIND 4020 PLD (P) OAUP4020E (P)

Sire: **HARVIE REDEMPTION 36P MC286641 (P) (R/F) OACZ6641E (P)**

HARVIE MS MOLSON 53M (P) PED-6280E (P)

AIRLIE ADONIS (AI) (ET) A1SA62E (H)

Dam: **MOONGOOL PICK-A-BACK 8 (P) DP2C266E (P)**

MOONGOOL PICK-A-BACK 6 (P) DP2A8E (P)

Comments: Low birth weight red factor bull by Canadian champion bull Harvie Redemption & a good polled Moongool foundation female. TESTED HOMOZYGOUS (90%) POLLED. A GOOD COMBINATION OF RED FACTOR & HOMOZYGOUS POLLED HERE.

TRAITS OBSERVED: GL,BWT,200WT,400WT,600WT(X2),SS,FAT,EMA,IMF



SEPTEMBER 2012 AUSTRALASIAN CHAROLAIS GROUP BREEDPLAN

	CED	CEM	GL	BW	200D	400D	600D	MCW	MILK	SS	DTC	CWT	EMA	RIB	RUMP	RBY	IMF
	+0.7	+3.0	-2.5	+0.5	+11	+29	+26	+10	0	+0.8	-	-	+1.4	+0.5	+0.6	+0.3	-0.2
	45%	38%	73%	72%	64%	65%	63%	61%	50%	70%	-	-	46%	50%	49%	48%	45%
\$ INDEX VALUES	DOMESTIC INDEX				+\$28				EXPORT INDEX			+\$32			NORTHERN TERMINAL INDEX		+\$16

Purchaser: \$

LOT 38 ASCOT G-FORCE G85E (AI) (ET) (P)

CALVED: 05/08/2011

TATTOO: JAJG85E

COLOUR: White

HORN: Polled

LT RIO BLANCO 1234 P (P) OAUW591E (P)

Sire: **LT RIO BRAVO 3181 P M665507 (P) OAU5507E (P)**

LT 7N OF DUKE 9083 PLD (P) OAUU2553E (P)

LT BLUEGRASS 4017P M686569 (P) OAUZ4017E (P)

Dam: **PARINGA BLUEGRASS D125 (AI) (ET) (P) TOLD125E (P)**

BRANCH VIEW MADONNA A106E (P) BVCA106E (P)

Comments: Top 1% 200D Wt & Scrotal Size. Top 5% 400 & 600D Wts., Rump Fat, IMF & all indexes. Top 10% for Calving Ease. Another Rio Bravo son & full ET brother to Lots 34 & 39. These are pretty well peas in a pod. TESTED HOMOZYGOUS (90%) POLLED. He has STUD SIRE potential with good temperament, length, thickness & depth. Go to www.ascotcattle.com.au to view a video of this bull

TRAITS OBSERVED: BWT,200WT,600WT(X2),SS,FAT,EMA,IMF



SEPTEMBER 2012 AUSTRALASIAN CHAROLAIS GROUP BREEDPLAN

	CED	CEM	GL	BW	200D	400D	600D	MCW	MILK	SS	DTC	CWT	EMA	RIB	RUMP	RBY	IMF
	+8.2	+2.6	-7.0	-0.6	+23	+42	+52	+51	+10	+3.5		+29	+1.1	+1.0	+1.9	-1.1	+0.9
	53%	46%	60%	75%	69%	70%	74%	67%	53%	76%		64%	57%	63%	62%	60%	57%
\$ INDEX VALUES	DOMESTIC INDEX				+\$57				EXPORT INDEX			+\$77			NORTHERN TERMINAL INDEX		+\$35

Purchaser: \$

LOT 39 ASCOT GUNPOWDER G84E (AI) (ET) (P)

CALVED: 05/08/2011

TATTOO: JAJG84E

COLOUR: White

HORN: Polled

LT RIO BLANCO 1234 P (P) OAUW591E (P)

Sire: LT RIO BRAVO 3181 P M665507 (P) OAU5507E (P)

LT 7N OF DUKE 9083 PLD (P) OAUU2553E (P)

LT BLUEGRASS 4017P M686569 (P) OAUZ4017E (P)

Dam: PARINGA BLUEGRASS D125 (AI) (ET) (P) TOLD125E (P)

BRANCH VIEW MADONNA A106E (P) BVCA106E (P)

Comments: Top 1% for Scrotal, 200D Wt & Rump Fat. Top 5% for 400D Wt, Rib Fat, IMF & all indexes. Top 10% for Calving Ease. Similar bull to his full brothers with better balanced EBVs. Once again fits the grass & grain fed market program well. Nice, quiet bull. TESTED HOMOZYGOUS (90%) POLLED.

TRAITS OBSERVED: BWT,200WT,600WT(X2),SS,FAT,EMA,IMF



SEPTEMBER 2012 AUSTRALASIAN CHAROLAIS GROUP BREEDPLAN

	CED	CEM	GL	BW	200D	400D	600D	MCW	MILK	SS	DTC	CWT	EMA	RIB	RUMP	RBY	IMF
	+8.2	+2.6	-7.0	-1.0	+22	+38	+42	+41	11	+2.7	-	+26	+2.2	+1.8	+3.0	-1.3	+1.1
	53%	46%	60%	75%	69%	70%	74%	67%	53%	76%	-	64%	57%	63%	62%	60%	57%
\$ INDEX VALUES	DOMESTIC INDEX				+\$57			EXPORT INDEX			+\$74		NORTHERN TERMINAL INDEX			+\$32	

Purchaser: \$

LOT 40 ASCOT GRENADE G18E (AI) (P) (TW)

CALVED: 07/08/2011

TATTOO: JAJG18E

COLOUR: White

HORN: Polled

LT ASSERTION 1277 PEDW1277F (H)

Sire: LT BLUEGRASS 4017P M686569 (P) OAUZ4017E (P)

LT PEARLS BREEZE 2236 PEDX2236F (H)

LT SILVER BAR 4216 P M686621 (P) (R/F) OAUZ4216E (P)

Dam: ASCOT MAXINE (AI) (P) JAJD5E (P)

PALGROVE MAXINE 86 (AI) (ET) (P) PKA560E (P)

Comments: Top 5% for Calving Ease, Low Birthweight. Top 10% for Fats, IMF & Domestic & Export Indexes. A bull with low birthweight EBVs but still retaining a real bull's outlook. TESTED HOMOZYGOUS (90%) POLLED.

TRAITS OBSERVED: BWT,200WT,600WT(X2),SS,FAT,EMA,IMF



SEPTEMBER 2012 AUSTRALASIAN CHAROLAIS GROUP BREEDPLAN

	CED	CEM	GL	BW	200D	400D	600D	MCW	MILK	SS	DTC	CWT	EMA	RIB	RUMP	RBY	IMF
	+10.8	+6.6	-5.0	-1.4	+15	+21	+18	-	+11	+1.0	-	-	+0.3	+1.1	+1.5	-1.2	+0.7
	52%	48%	56%	57%	57%	56%	56%	-	55%	56%	-	-	47%	51%	51%	48%	46%
\$ INDEX VALUES	DOMESTIC INDEX				+\$44			EXPORT INDEX			+\$54		NORTHERN TERMINAL INDEX			+\$19	

Purchaser: \$

LOT 41 ASCOT HEIRLOOM

CALVED: 15/01/2012

TATTOO: H1

COLOUR: White

HORN: Polled

SELECTED

Sire: CHAROLAIS SIRE

GUNNADOO WHIZ KID

Dam: GOBONGO PENNY Z91E (P) GOZ91E

VEEJAY PENNY L3E (P)

Comments: Unregistered yearling bull out of a great polled Gobongo female. This bull will mature to a larger framed bull.



Purchaser: \$

LOT 42 ASCOT HANDS DOWN (AI) (ET) (P) (R/F)

CALVED: 20/09/2012

TATTOO: JAJH89E

COLOUR: Red Factor

HORN: Polled

LT WYOMING WIND 4020 PLD (P) OAUP4020E (P)

Sire: **HARVIE REDEMPTION 36P MC286641 (P) (R/F) OACZ6641E (P)**
HARVIE MS MOLSON 53M (P) PED-6280E (P)

PALGROVE VALIANT (AI) PKV167E (H)

Dam: **PALGROVE NANETTE 179 (AI) PKD84E (H)**

PALGROVE NANETTE 86 (AI) (R/F) PKW106E (H)

Comments: Top 1% 400D Wt. Top 5% 200 & 600D Wts, Scrotal Size & Fats. *STUD SIRE POTENTIAL.* This bull is a polled red factor with good bone, thickness & length. Extremely quiet. He is by the Canadian champion sire Harvie Redemption. His dam is a magnificent Palgrove cow we purchased as a heifer for \$20,000.00 This is an ET calf from her. She is one of our top breeders in the herd. One of our picks in the sale. Don't overlook. **Go to www.ascotcattle.com.au to view a video of this bull**

TRAITS OBSERVED: BWT,200WT,400WT,SS,FAT,EMA,IMF



SEPTEMBER 2012 AUSTRALASIAN CHAROLAIS GROUP BREEDPLAN

	CED	CEM	GL	BW	200D	400D	600D	MCW	MILK	SS	DTC	CWT	EMA	RIB	RUMP	RBY	IMF	
	-11.3	-7.6	-0.8	+3.6	+21	+43	+56	-	+2	+2.3	-	-	-0.4	+1.8	+2.5	-1.4	+0.3	
	47%	41%	61%	70%	65%	65%	63%	-	52%	72%	-	-	49%	52%	51%	51%	48%	
\$ INDEX VALUES	DOMESTIC INDEX				+\$11			EXPORT INDEX			+\$18			NORTHERN TERMINAL INDEX			+\$15	

Purchaser: \$

LOT 43 ASCOT HERALD H32E (P)

CALVED: 21/08/2012

TATTOO: JAJH32E

COLOUR: White

HORN: Polled

LT WESTERN SPUR 2061 PLD M645785 (P) OAUX2061E (P)

Sire: **PARINGA WESTERN SPUR D196 (AI) (ET) (P) TOLD196E (P)**
ROSDALE BOBBIN Y74 (P) MRY74E (P)

GOBONGO VILLEROY V80E GOV80E

Dam: **GOBONGO LOLA Z112E GOZ112E (D)**

GOBONGO LAURA R19E GOR19E (D)

Comments: Top 1% 200, 400 & 600D Wts, Top 5 Terminal Index, Top 10% EMA & Scrotal Size. Top 20% Rump Fat. *STUD SIRE POTENTIAL.* Nicknamed 'Fabio' he lives up to this name. He really stands out with everyone that inspects the bulls. Magnificent phenotype by our homozygous polled sire Paringa Western Spur & a Gobongo foundation female. A real herd improver.

Go to www.ascotcattle.com.au to view a video of this bull

TRAITS OBSERVED: BWT,200WT,400WT,SS,FAT,EMA,IMF



SEPTEMBER 2012 AUSTRALASIAN CHAROLAIS GROUP BREEDPLAN

	CED	CEM	GL	BW	200D	400D	600D	MCW	MILK	SS	DTC	CWT	EMA	RIB	RUMP	RBY	IMF	
	-4.0	-	-2.1	+2.3	+23	+44	+62	-	+2	+1.9	-	-	+2.6	+0.6	+1.1	+0.7	-0.6	
	41%	-	55%	70%	65%	67%	64%	-	47%	73%	-	-	52%	54%	54%	53%	53%	
\$ INDEX VALUES	DOMESTIC INDEX				+\$30			EXPORT INDEX			+\$46			NORTHERN TERMINAL INDEX			+\$29	

Purchaser: \$

LOT 44 ASCOT HIGHLIGHT H35E (AI) (ET) (P) (R/F)

CALVED: 23/08/2012

TATTOO: JAJH35E

COLOUR: Red Factor

HORN: Polled

LT WESTERN SPUR 2061 PLD M645785 (P) OAUX2061E (P)

Sire: **PARINGA WESTERN SPUR D196 (AI) (ET) (P) TOLD196E (P)**
ROSDALE BOBBIN Y74 (P) MRY74E (P)

PLATINUM ULTRA (P) AJ1U37E (P)

Dam: **JABCO DAWN D41E (P/S) (R/F) JA2D41E (S)**

JABCO DAWN B17E (R/F) JA2B17E (D)

Comments: Top 10% Domestic & Export Indexes. Top 20% 400 & 600D Wts. This Red factor bull has been a standout since a calf. Well grown, good muscle, soft & quiet. He is one of our favourites in the sale. Full brother to Lot 48. Could suit stud duties.

TRAITS OBSERVED: BWT, 200WT, 400WT, SS, FAT, EMA, IMF



SEPTEMBER 2012 AUSTRALASIAN CHAROLAIS GROUP BREEDPLAN

	CED	CEM	GL	BW	200D	400D	600D	MCW	MILK	SS	DTC	CWT	EMA	RIB	RUMP	RBY	IMF	
	+4.9	0.0	-4.2	-0.7	+14	+29	+40	-	+10	+2.6	-	-	+1.0	+0.5	+1.1	-0.2	-	
	43%	36%	55%	57%	56%	55%	55%	-	46%	52%	-	-	46%	49%	50%	46%	-	
\$ INDEX VALUES	DOMESTIC INDEX				+\$37			EXPORT INDEX			+\$53			NORTHERN TERMINAL INDEX			+\$27	

Purchaser: \$

LOT 45 ASCOT HORSEPOWER H86E (AI) (ET) (P)

CALVED: 19/09/2012

TATTOO: JAJH86E

COLOUR: White

HORN: Polled

LT WYOMING WIND 4020 PLD (P) OAUP4020E (P)

Sire: **HARVIE REDEMPTION 36P MC286641 (P) (R/F) OACZ6641E (P)**
HARVIE MS MOLSON 53M (P) PED-6280E (P)

BALDRIDGE FASTTRACK 82E M447863 (P) OAUR82E (P)

Dam: **GOBONGO JULIETTE B43E (AI) (P) GOB43E (P)**
GOBONGO JULIETTE Z15E GOZ15E (D)

Comments: Top 5% 200 & 400 Wts. Top 10% 600D Wt, Scrotal Size & all indexes. Potential for stud duties. He is full brother to Lot 32. The great combination of Harvie Redemption & the Interbreed Grand Champion Gobongo Juliette. Extra quiet bull with great softness while still retaining muscle & style. **Balance of EBVs available by sale day.**

TRAITS OBSERVED: GL,BWT,200WT,400WT,SS,FAT,EMA,IMF



SEPTEMBER 2012 AUSTRALASIAN CHAROLAIS GROUP BREEDPLAN

	CED	CEM	GL	BW	200D	400D	600D	MCW	MILK	SS	DTC	CWT	EMA	RIB	RUMP	RBY	IMF	
	+2.3	+3.1	-2.3	+0.1	+19	+39	+46	-	+9	+1.8	-	-	-	-	-	-	-	
	47%	40%	55%	57%	56%	55%	54%	-	49%	53%	-	-	-	-	-	-	-	
\$ INDEX VALUES	DOMESTIC INDEX				+\$43			EXPORT INDEX			+\$57			NORTHERN TERMINAL INDEX			+\$27	

Purchaser: \$

LOT 46 ASCOT HIGHBROW H73D (AI) (P)

CALVED: 25/08/2012

TATTOO: JAJH73D

COLOUR: White

HORN: Polled

LT ASSERTION 1277 PEDW1277F (H)

Sire: **LT BLUEGRASS 4017P M686569 (P) OAUZ4017E (P)**
LT PEARLS BREEZE 2236 PEDX2236F (H)

MOONGOOL SIMON DP2S73E (H)

Dam: **MOONGOOL RASCAL 4 DP2Z297C (H)**
MOONGOOL RASCAL 2 DP2U71B (H)

Comments: Top 5% IMF. Top 10% Calving Ease, Rib & Rump Fats & Low Birthweight. A bull by LT Bluegrass & a very large capacity Moongool female, this bull combines positive fat with good carcass.

TRAITS OBSERVED: GL,BWT,200WT,400WT,SS,FAT,EMA,IMF



SEPTEMBER 2012 AUSTRALASIAN CHAROLAIS GROUP BREEDPLAN

	CED	CEM	GL	BW	200D	400D	600D	MCW	MILK	SS	DTC	CWT	EMA	RIB	RUMP	RBY	IMF	
	+10.9	+5.8	-4.0	-1.5	+7	+3	0	+6	+3	+1.3	-	-1	-0.8	+1.4	+2.0	-1.9	+0.8	
	53%	47%	74%	72%	66%	68%	67%	62%	56%	75%	-	60%	53%	56%	54%	55%	52%	
\$ INDEX VALUES	DOMESTIC INDEX				+\$30			EXPORT INDEX			+\$42			NORTHERN TERMINAL INDEX			+\$9	

Purchaser: \$

LOT 47 ASCOT HOBNOB H85E (AI) (ET) (P) (R/F)

CALVED: 19/09/2012

TATTOO: JAJH85E

COLOUR: Red Factor

HORN: Polled

LT WYOMING WIND 4020 PLD (P) OAUP4020E (P)

Sire: **HARVIE REDEMPTION 36P MC286641 (P) (R/F) OACZ6641E (P)**
HARVIE MS MOLSON 53M (P) PED-6280E (P)

PALGROVE VALIANT (AI) PKV167E (H)

Dam: **PALGROVE NANETTE 179 (AI) PKD84E (H)**
PALGROVE NANETTE 86 (AI) (R/F) PKW106E (H)

Comments: Top 1% 200D Wt & Scrotal Size. Top 5% 400 & 600D Wts & Rib & Rump Fats. Red factor bull with extra length & bone. Quiet disposition. Full brother to Lot 42, so is the combination of the great Harvie Redemption & Palgrove Nanette purchased from Palgrove Stud for \$20,000.00. Could suit Red factor Polled stud program.

TRAITS OBSERVED: BWT,200WT,400WT,SS,FAT,EMA,IMF



SEPTEMBER 2012 AUSTRALASIAN CHAROLAIS GROUP BREEDPLAN

	CED	CEM	GL	BW	200D	400D	600D	MCW	MILK	SS	DTC	CWT	EMA	RIB	RUMP	RBY	IMF	
	-11.3	-7.6	-1.0	+3.4	+22	+39	+55	-	+1	+2.8	-	-	+0.3	+1.8	+2.6	-1.1	+0.3	
	47%	41%	61%	70%	65%	65%	63%	-	52%	72%	-	-	49%	52%	51%	51%	48%	
\$ INDEX VALUES	DOMESTIC INDEX				+\$9			EXPORT INDEX			+\$19			NORTHERN TERMINAL INDEX			+\$16	

Purchaser: \$



Colin Say & Co. Pty Ltd

Est. 1958

ABN 32 000 835 370

- » **Weekly Cattle Sales**
- » **Selling to Feedlots**
- » **Auctions Plus Livestock Sales**
- » **Rural Property Sales**

- » **Weekly Prime Lamb & Sheep Sales**
- » **Consignment of Stock**
- » **Stud Stock Sales**
- » **Market Appraisals for your requirements**

PERSONALISED SERVICE

“Leading by Results”

Licensed Auctioneers - Stock, Station & Real Estate Agents

118 Wentworth St (PO Box 189), Glen Innes. NSW 2370

Phone 02 6732 1266 • Fax 02 6732 4073

office@colinsay.com.au

www.colinsay.com.au

CRAIG THOMAS
0428 669 500

NATHAN PURVIS
0427 324 078

SHAD BAILEY
0458 322 283

North East Stud Stock Team

Landmark's experienced North Eastern Stud Stock team is always close at hand with sound advice and friendly service. Strategically located throughout Queensland and New South Wales, one of our team members is never far away.

For local advice that makes the world of difference, contact a member of our committed staff today.



Rockhampton
Bruce Scott 0418 961 041
Mark Scholes 0409 229 651
Colby Ede 0417 265 980

Dalby
Peter Brazier 0418 967 421

Gympie - Manager
Michael Lawton 0409 370 513

Toowoomba
Anthony Ball 0428 324 919

Tamworth
Joel Fleming 0467 725 195

Dubbo
John Settree 0408 297 368

landmark.com.au

LANDMARK

LOT 48 ASCOT HAWKEYE H22E (AI) (ET) (P)

CALVED: 22/08/2012

TATTOO: JAJH22E

COLOUR: White

HORN: Polled

LT WESTERN SPUR 2061 PLD M645785 (P) OAUX2061E (P)

Sire: **PARINGA WESTERN SPUR D196 (AI) (ET) (P) TOLD196E (P)**
ROSDALE BOBBIN Y74 (P) MRY74E (P)

PLATINUM ULTRA (P) AJ1U37E (P)

Dam: **JABCO DAWN D41E (P/S) (R/F) JA2D41E (S)**
JABCO DAWN B17E (R/F) JA2B17E (D)

Comments: Top 1% Scrotal Size. Top 10% 400 & 600D Wts & all indexes. Full ET brother to Lot 44 with the same style. This bull has attracted a lot of attention. A lot of meat & softness here. Could also suit stud duties or extra high quality commercial bull.

TRAITS OBSERVED: BWT,200WT,400WT,SS,FAT,EMA,IMF



SEPTEMBER 2012 AUSTRALASIAN CHAROLAIS GROUP BREEDPLAN

	CED	CEM	GL	BW	200D	400D	600D	MCW	MILK	SS	DTC	CWT	EMA	RIB	RUMP	RBY	IMF
	+5.1	0.0	-4.6	-0.7	+15	+33	+46	-	+9	+3.9	-	-	+1.2	+0.1	+0.7	+0.2	-0.5
	43%	36%	56%	66%	61%	62%	60%	-	46%	67%	-	-	51%	53%	54%	51%	52%
\$ INDEX VALUES	DOMESTIC INDEX				+\$41			EXPORT INDEX			+\$61			NORTHERN TERMINAL INDEX			+\$30

Purchaser: \$

LOT 49 ASCOT HACKSAW H46E (AI) (P)

CALVED: 01/09/2012

TATTOO: JAJH46E

COLOUR: White

HORN: Polled

LT WESTERN SPUR 2061 PLD M645785 (P) OAUX2061E (P)

Sire: **PARINGA WESTERN SPUR D196 (AI) (ET) (P) TOLD196E (P)**
ROSDALE BOBBIN Y74 (P) MRY74E (P)

AIRLIE ADONIS (AI) (ET) A1SA62E (H)

Dam: **MOONGOOL PICK-A-BACK 8 (P) DP2C266E (P)**
MOONGOOL PICK-A-BACK 6 (P) DP2A8E (P)

Comments: Top 10% EMA. Top 15% all indexes. Top 20% 400D Wt. Well put together bull with loads of red meat & thickness. A very eye catching young sire. One of our favourites.

TRAITS OBSERVED:

SEPTEMBER 2012 AUSTRALASIAN CHAROLAIS GROUP BREEDPLAN

	CED	CEM	GL	BW	200D	400D	600D	MCW	MILK	SS	DTC	CWT	EMA	RIB	RUMP	RBY	IMF
	+3.7	-	-3.5	-0.3	+10	+28	+31	+20	+2	+1.5	-	-	+2.9	-0.2	+0.1	+1.4	-1.0
	42%	-	74%	72%	65%	67%	64%	61%	46%	73%	-	-	52%	54%	54%	53%	53%
\$ INDEX VALUES	DOMESTIC INDEX				+\$36			EXPORT INDEX			+\$46			NORTHERN TERMINAL INDEX			+\$23

Purchaser: \$



LOT 50 ASCOT HITMAN H88E (AI) (ET) (P)

CALVED: 20/09/2012

TATTOO: JAJH88E

COLOUR: White

HORN: Polled

LT WYOMING WIND 4020 PLD (P) OAUP4020E (P)

Sire: **HARVIE REDEMPTION 36P MC286641 (P) (R/F) OACZ6641E (P)**
HARVIE MS MOLSON 53M (P) PED-6280E (P)

BALDRIDGE FASTTRACK 82E M447863 (P) OAUR82E (P)

Dam: **GOBONGO JULIETTE B43E (AI) (P) GOB43E (P)**
GOBONGO JULIETTE Z15E GOZ15E (D)

Comments: Top 5% 200, 400 & 600D Wts, Rib & Rump Fats. Top 10% Scrotal Size & all indexes. One of the heavier bulls that is also super soft. He has an elite pedigree & is full brother to Lot 32. You know what he'll mature into. These are the bulls we like to breed - quiet, soft & early-mid maturing. A nice bull all round. Once again we think would be good enough for polled stud duties.

TRAITS OBSERVED: BWT,200WT,400WT,SS,FAT,EMA,IMF

SEPTEMBER 2012 AUSTRALASIAN CHAROLAIS GROUP BREEDPLAN

	CED	CEM	GL	BW	200D	400D	600D	MCW	MILK	SS	DTC	CWT	EMA	RIB	RUMP	RBY	IMF
	+0.7	+2.7	-2.3	+0.6	+21	+46	+54	-	+9	+2.0	-	-	+0.3	+1.6	+2.1	-1.0	+0.2
	47%	40%	57%	70%	64%	65%	63%	-	49%	72%	-	-	49%	52%	51%	51%	48%
\$ INDEX VALUES	DOMESTIC INDEX				+\$46			EXPORT INDEX			+\$60			NORTHERN TERMINAL INDEX			+\$30

Purchaser: \$



LOT 51 ASCOT HAT TRICK H47E (AI) (P)

CALVED: 1/09/2012

TATTOO: JAJH47E

COLOUR: White

HORN: Polled

EATONS ELEMENT 1353 PED-2286E

Sire: **NWMSU PLATINUM 4108 (P) OAUZ8062E (P)**
NWMSU AURICULA 077 ET PED-3149E

KINDARA ACE (AI) K4PA28E (H)

Dam: **GOBONGO BUFFY D109E GOD109E (D)**
GOBONGO BUFFY Z89E (P) GOZ89E (P)

Comments: Top 1% 400 & 600D Wts. Top 5% 200D Wt & Terminal Index. Top 10% IMF. Top 20% Scrotal Size. A bull with extra length & good softness. By the New US sire Platinum. He is a bull with good carcass & interesting outcross genetics. One of the first Platinum bulls for sale in Australia. A well grown bull that would be a great commercial bull to add meat & finishing ability to his progeny.

TRAITS OBSERVED: GL,BWT,200WT,400WT,SS,FAT,EMA,IMF



SEPTEMBER 2012 AUSTRALASIAN CHAROLAIS GROUP BREEDPLAN

	CED	CEM	GL	BW	200D	400D	600D	MCW	MILK	SS	DTC	CWT	EMA	RIB	RUMP	RBY	IMF
	-	-	-3.8	+1.8	+19	+43	+59	-	+5	+1.4	-	-	+1.6	+0.1	+0.2	0.0	+0.7
	-	-	72%	69%	62%	63%	58%	-	35%	72%	-	-	43%	46%	44%	45%	42%
\$ INDEX VALUES	DOMESTIC INDEX				+\$33			EXPORT INDEX				+\$47		NORTHERN TERMINAL INDEX			+\$30

Purchaser: \$

LOT 52 ASCOT HOLSTER H90E (AI) (ET) (P)

CALVED: 20/09/2012

TATTOO: JAJH90E

COLOUR: White

HORN: Polled

WCR SIR TRADITION 066 PED-66E (H)

Sire: **M6 GRID MAKER 104 PET M633377 (P) OAUW3377E (P)**
VCR MISS MAC IV 317 PED-317E (H)

WCR SIR FA MAC 2244 M 234430 (P) OAUB2244E (P)

Dam: **PALGROVE REFINE 66 (AI) (ET) (P) PKW423E (P)**
PALGROVE REFINE 32 PKS135E (H)

Comments: Top 5% 600D Wt. Top 10% 400D Wt, Scrotal Size, EMA, all indexes & Low Birthweight. A real standout with a sirey outlook, extra muscle while still retaining positive fat. Out of a top Palgrove donor cow. He is by one of the leading USA AI sires Grid Maker. Holster has pedigree, phenotype & finishing ability. A great young bull.

TRAITS OBSERVED:



SEPTEMBER 2012 AUSTRALASIAN CHAROLAIS GROUP BREEDPLAN

	CED	CEM	GL	BW	200D	400D	600D	MCW	MILK	SS	DTC	CWT	EMA	RIB	RUMP	RBY	IMF
	+5.4	+4.6	-8.0	-1.6	+13	+31	+50	-	+19	+1.9	-	-	+2.7	0.0	-0.2	+0.9	+0.3
	52%	48%	61%	62%	62%	61%	60%	-	58%	58%	-	-	50%	54%	54%	51%	51%
\$ INDEX VALUES	DOMESTIC INDEX				+\$46			EXPORT INDEX				+\$65		NORTHERN TERMINAL INDEX			+\$33

Purchaser: \$

LOT 53 ASCOT HERCULES H68E (P)

CALVED: 07/09/2012

TATTOO: JAJH68E

COLOUR: White

HORN: Polled

LT WESTERN SPUR 2061 PLD M645785 (P) OAUX2061E (P)

Sire: **PARINGA WESTERN SPUR D196 (AI) (ET) (P) TOLD196E (P)**
ROSDALE BOBBIN Y74 (P) MRY74E (P)

MINNIE VALE SUNDANCE SGSS31E (H)

Dam: **MOONGOOL QUARTER MOON 7 DP2A293E (H)**
MOONGOOL QUARTER MOON DP2Q35D (H)

Comments: A bull that will mature to a larger frame bull. Out of another of our Interbreed Champion cows Moongool Quarter Moon 7. Extra length & good bone in this bull.

TRAITS OBSERVED: BWT,200WT,400WT,SS,FAT,EMA,IMF



SEPTEMBER 2012 AUSTRALASIAN CHAROLAIS GROUP BREEDPLAN

	CED	CEM	GL	BW	200D	400D	600D	MCW	MILK	SS	DTC	CWT	EMA	RIB	RUMP	RBY	IMF
	-4.0	-2.7	-1.8	+1.4	+13	+26	+37	+39	+5	+0.4	-	+20	+0.1	+0.2	+0.6	0.0	-0.6
	5%	37%	57%	72%	66%	68%	66%	62%	48%	74%	-	61%	54%	56%	56%	55%	55%
\$ INDEX VALUES	DOMESTIC INDEX				+\$9			EXPORT INDEX				+\$14		NORTHERN TERMINAL INDEX			+\$15

Purchaser: \$

LOT 54 ASCOT HIGHLANDER H67E (AI) (P) (R/F)

CALVED: 06/09/2012

TATTOO: JAJH67E

COLOUR: Red Factor

HORN: Polled

LT WYOMING WIND 4020 PLD (P) OAUP4020E (P)

Sire: **HARVIE REDEMPTION 36P MC286641 (P) (R/F) OACZ6641E (P)**
HARVIE MS MOLSON 53M (P) PED-6280E (P)

NANDILLYAN A61E FA61E (H)

Dam: **ASCOT PASTILLE JAJE2E (H)**

MOONGOOL PASTILLE 2 DP2V190E (H)

Comments: Top 1% Scrotal Size. Top 10% 200, 400 & 600D Wts. A very well grown young red factor bull with extra bone & length. Maternal brother to \$13,000.00 bull sold to Palgrove Stud in our last year's sale. By the Canadian Champion Harvie Redemption, he is a bull to have a second look at.

TRAITS OBSERVED: GL,BWT,200WT,400WT,SS,FAT,EMA,IMF



SEPTEMBER 2012 AUSTRALASIAN CHAROLAIS GROUP BREEDPLAN

	CED	CEM	GL	BW	200D	400D	600D	MCW	MILK	SS	DTC	CWT	EMA	RIB	RUMP	RBY	IMF
	-4.0	-1.8	-1.0	+1.2	+18	+36	+44	-	+3	+3.1	-	-	-1.0	+0.1	+0.3	-0.6	-0.1
	44%	37%	73%	70%	63%	65%	62%	-	47%	73%	-	-	49%	52%	51%	51%	47%
\$ INDEX VALUES	DOMESTIC INDEX				+\$20			EXPORT INDEX			+\$30			NORTHERN TERMINAL INDEX			+\$16

Purchaser: \$

LOT 55 ASCOT HELIX H99E (P)

CALVED: 24/09/2012

TATTOO: JAJH99E

COLOUR: White

HORN: Polled

LT RIO BRAVO 3181 P M665507 (P) OAUY5507E (P)

Sire: **RANGAN PARK RIO BRAVO E18 (AI) (ET) (P) RANE18E (P)**
PALGROVE SHOW GIRL 6 (AI) (P) PKP82E (P)

HARVIE REDEMPTION 36P MC286641 (P) (R/F) OACZ6641E (P)

Dam: **ASCOT F8E (AI) (ET) (P) JAJF8E (P)**

MOONGOOL QUARTER MOON 7 DP2A293E (H)

Comments: Top 10% 200, 400 & 600D Wts. Nice bull by the Rangan Park Rio Bravo sire. Extra soft with a good skin type.

TRAITS OBSERVED: BWT,200WT,400WT,SS,FAT,EMA,IMF



SEPTEMBER 2012 AUSTRALASIAN CHAROLAIS GROUP BREEDPLAN

	CED	CEM	GL	BW	200D	400D	600D	MCW	MILK	SS	DTC	CWT	EMA	RIB	RUMP	RBY	IMF
	-5.3	-5.1	-2.5	+1.7	+17	+33	+43	+31	+8	+1.2	-	-	+0.8	+0.4	+0.6	-0.1	+0.4
	44%	36%	56%	70%	65%	67%	65%	61%	45%	73%	-	-	52%	57%	56%	55%	51%
\$ INDEX VALUES	DOMESTIC INDEX				+\$13			EXPORT INDEX			+\$16			NORTHERN TERMINAL INDEX			+\$17

Purchaser: \$

LOT 56 ASCOT HEAVE-HO H62E (AI) (ET) (P)

CALVED: 12/09/2012

TATTOO: JAJH62E

COLOUR: White

HORN: Polled

WCR SIR TRADITION 066 PED-66E (H)

Sire: **M6 GRID MAKER 104 PET M633377 (P) OAUW3377E (P)**
VCR MISS MAC IV 317 PED-317E (H)

WCR SIR FA MAC 2244 M 234430 (P) OAUB2244E (P)

Dam: **PALGROVE REFINE 66 (AI) (ET) (P) PKW423E (P)**

PALGROVE REFINE 32 PKS135E (H)

Comments: Top 5% IMF, all indexes & Low Birthweight. Top 10% Calving Ease, 600D & Carcass Wts & EMA. Another good all round bull by Grid Maker, out of one of our donors - Palgrove Refine. Good muscle, good fat cover & quiet. Full ET brother to Lot 52.

TRAITS OBSERVED: BWT,200WT,400WT,SS,FAT,EMA,IMF



SEPTEMBER 2012 AUSTRALASIAN CHAROLAIS GROUP BREEDPLAN

	CED	CEM	GL	BW	200D	400D	600D	MCW	MILK	SS	DTC	CWT	EMA	RIB	RUMP	RBY	IMF
	+8.4	+5.5	-7.8	-2.3	+9	+26	+41	+20	+22	+0.9	-	+29	+2.8	-0.1	-0.4	+0.7	+0.8
	53%	48%	63%	73%	68%	69%	67%	65%	58%	74%	-	62%	56%	59%	59%	57%	56%
\$ INDEX VALUES	DOMESTIC INDEX				+\$49			EXPORT INDEX			+\$65			NORTHERN TERMINAL INDEX			+\$31

Purchaser: \$

LOT 57 ASCOT HENRY H75E (AI) (P)

CALVED: 27/09/2012

TATTOO: JAJH75E

COLOUR: White

HORN: Polled

LT RIO BRAVO 3181 P M665507 (P) OAU5507E (P)
Sire: PARINGA RIO BRAVO F251 (AI) (ET) (P) TOLF251E (P)
 PALGROVE CARIN 21 (AI) PKY10E (H)

MOONGOOL ATHOL (P/S) DP2A217E (S)
Dam: 4 WAYS REFINE (SS) (AI) (P) 4WCD45E (P)
 PALGROVE REFINE 94 (AI) PKZ69E (H)

Comments: Top 5% 200, 400 & 600D Wts & Scrotal Size. Top 10% Rib & Rump Fats, IMF & all indexes. Great bull that will add softness to his progeny, out of one of our best cows. Good balance of EBVs with positive Eye Muscle & positive fats.

TRAITS OBSERVED: GL,BWT,200WT,400WT,SS,FAT,EMA,IMF



SEPTEMBER 2012 AUSTRALASIAN CHAROLAIS GROUP BREEDPLAN

	CED	CEM	GL	BW	200D	400D	600D	MCW	MILK	SS	DTC	CWT	EMA	RIB	RUMP	RBY	IMF	
	+3.6	-	-5.0	+0.8	+21	+36	+52	-	+7	+2.3	-	-	+2.3	+1.1	+1.8	-0.3	+0.7	
	38%	-	72%	68%	59%	61%	57%	-	42%	72%	-	-	46%	46%	45%	47%	44%	
\$ INDEX VALUES	DOMESTIC INDEX				+\$40			EXPORT INDEX			+\$59			NORTHERN TERMINAL INDEX			+\$32	

Purchaser: \$

LOT 58 ASCOT HIGHWAYMAN H91E (P)

CALVED: 23/09/2012

TATTOO: JAJH91E

COLOUR: White

HORN: Polled

LT RIO BRAVO 3181 P M665507 (P) OAU5507E (P)
Sire: RANGAN PARK RIO BRAVO E18 (AI) (ET) (P) RANE18E (P)
 PALGROVE SHOW GIRL 6 (AI) (P) PKP82E (P)

FBALLINDALLOCH UFO MBM0012401 (P) IAEY2401F (P)
Dam: ASCOT F4E (AI) JAJF4E (H)
 PALGROVE IDEAL 40 PKT276E (H)

Comments: Top 10% 200D Wt, Scrotal Size & all indexes. Top 15% 400D Wt. Bull with good length & bone by one of the highest IMF bulls Rangan Park Rio Bravo. Another soft, polled bull but still retaining good carcass traits.

TRAITS OBSERVED: BWT,200WT,400WT,SS,FAT,EMA,IMF



SEPTEMBER 2012 AUSTRALASIAN CHAROLAIS GROUP BREEDPLAN

	CED	CEM	GL	BW	200D	400D	600D	MCW	MILK	SS	DTC	CWT	EMA	RIB	RUMP	RBY	IMF	
	+6.1	-	-3.2	-0.3	+18	+30	+40	+40	+9	+2.0	-	-	+2.1	-0.5	-0.4	+0.8	+0.2	
	42%	-	57%	70%	64%	66%	64%	60%	44%	73%	-	-	51%	55%	54%	53%	50%	
\$ INDEX VALUES	DOMESTIC INDEX				+\$38			EXPORT INDEX			+\$51			NORTHERN TERMINAL INDEX			+\$27	

Purchaser: \$

LOT 59 ASCOT HEDGEFUND H74E (AI) (P)

CALVED: 27/09/2012

TATTOO: JAJH74E

COLOUR: White

HORN: Polled

LT WYOMING WIND 4020 PLD (P) OAU4020E (P)
Sire: HARVIE REDEMPTION 36P MC286641 (P) (R/F) OACZ6641E (P)
 HARVIE MS MOLSON 53M (P) PED-6280E (P)

EXCLUSIF 8589103317 OAFJ858F (H)
Dam: PALGROVE DESIRE 33 (AI) (ET) PKT264F (H)
 CHARMHAVEN D41F WHYD41F

Comments: Top 10% 400D Wt. Good bull out of a Palgrove Desire cow. This bull has good bone & extra length.

TRAITS OBSERVED: GL,BWT,200WT,400WT,SS,FAT,EMA,IMF



SEPTEMBER 2012 AUSTRALASIAN CHAROLAIS GROUP BREEDPLAN

	CED	CEM	GL	BW	200D	400D	600D	MCW	MILK	SS	DTC	CWT	EMA	RIB	RUMP	RBY	IMF	
	+3.3	-4.4	-0.3	+1.1	+14	+31	+35	+23	+6	+0.7	-	-	+1.4	+0.4	+0.3	+0.2	+0.3	
	51%	46%	75%	73%	67%	68%	66%	63%	57%	75%	-	-	52%	55%	54%	54%	50%	
\$ INDEX VALUES	DOMESTIC INDEX				+\$28			EXPORT INDEX			+\$34			NORTHERN TERMINAL INDEX			+\$21	

Purchaser: \$

LOT 60 ASCOT HEIRARCHY H94E (AI) (P)

CALVED: 23/09/2012

TATTOO: JAJH94E

COLOUR: White

HORN: Polled

LT ASSERTION 1277 PEDW1277F (H)

Sire: **LT BLUEGRASS 4017P M686569 (P) OAUZ4017E (P)**

LT PEARLS BREEZE 2236 PEDX2236F (H)

AIRLIE BONAPARTE B2F (AI) A15B2F (H)

Dam: **ASCOT JOSIE JAJD9E (H)**


PALGROVE IDEAL 40 PKT276E (H)



Comments: Will mature to a larger framed bull. Soft, easy doing bull by Lt Bluegrass. Last chance for a polled Charolais at this year's sale. Balanced EBVs.

TRAITS OBSERVED: GL,BWT,200WT,400WT,SS,FAT,EMA,IMF

SEPTEMBER 2012 AUSTRALASIAN CHAROLAIS GROUP BREEDPLAN

	CED	CEM	GL	BW	200D	400D	600D	MCW	MILK	SS	DTC	CWT	EMA	RIB	RUMP	RBY	IMF
	+6.2	+3.8	-3.6	+0.5	+14	+20	+18	+21	+6	+0.8	-	-	+2.0	+0.1	+0.1	+0.3	+0.4
	52%	47%	74%	72%	67%	68%	66%	64%	56%	75%	-	-	54%	57%	56%	56%	53%
\$ INDEX VALUES	DOMESTIC INDEX			+\$29			EXPORT INDEX			+\$34			NORTHERN TERMINAL INDEX			+\$15	

Purchaser: \$

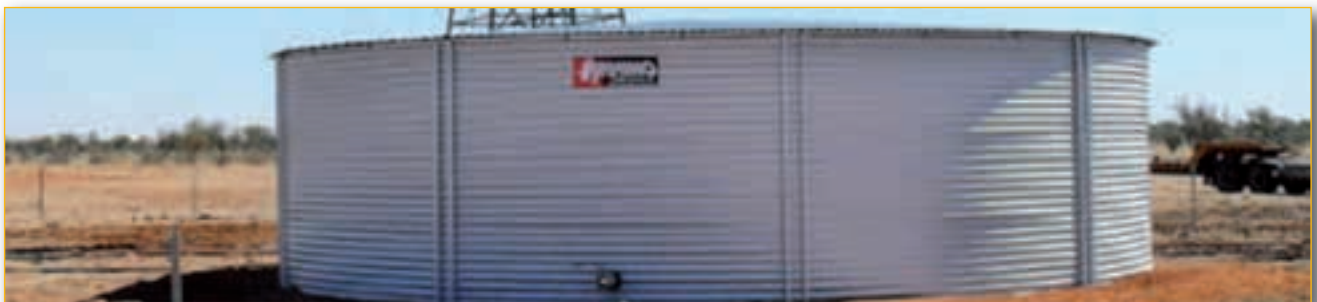


RHINO TANKS & LINERS

Sizes from **12,000** to **50,000** Gallons

Zincalume or Colorbond - 20 Year Warranty

Phone: 07 4622 4528



QUEENSLAND LIVESTOCK AGENTS ASSOCIATION LIMITED

STANDARD STUD STOCK - AUCTION TERMS AND CONDITIONS OF SALE

IMPORTANT NOTE: All bids shall be treated as offers made upon the following Terms and Conditions of Sale and all persons present are admitted to attend the sale on the basis that they have notice of these Terms and Conditions.

1. The highest bidder shall, subject to Conditions 2, be the purchaser provided that the vendor reserves the right to bid either by himself or through his agent or auctioneer and should any dispute arise among the bidders for any lot, during or immediately after sale of the lot, it shall be settled at the auctioneer's absolute discretion who may, should one of the disputants advance, put the lot or lots up again. The bidding from time to time shall be regulated by the auctioneer and no bid shall be retracted.
 2. The sale will be conducted on a "Sale" or "No Sale" basis, whereby the lot for sale shall be knocked down to the highest bidder, but the sale will be subject to the acceptance of the highest bidder such bidder will have the right of first refusal of the lot at the vendor's nominated price for one hour after the lot has been passed out of the ring on the Terms and Conditions herein set forth in so far as they shall apply.
 3. The details of the purchaser, the purchase price and the lot sold as recorded by the Sale Clerk for and on behalf of the auctioneer shall be equally binding on both purchaser and vendor.
 4. The auctioneer expressly reserves the right, without giving any reason therefore to:-
 - (a) Refuse to acknowledge any bid;
 - (b) Withdraw any lot or lots before or during the sale;
 - (c) Exclude any person from the auction venue should it think fit.
 5. Each lot in all cases shall be at the risk and expense of the purchaser, upon acceptance of his bid by the vendor or upon acceptance of the highest bidder's offer by the vendor whichever shall be the earlier.
 6. Except as expressly provided in these Terms and Conditions of Sale no guarantee or warranty shall be given in respect of any lot sold under these conditions as made before or at the time of the sale, or from any circumstances of the sale, but in all cases where a guarantee is intended the same shall attach and be enforceable only if reduced to writing before delivery of the lot and signed by the vendor or by the auctioneer acting as agent for the vendor, and the absence of such writing shall be conclusive evidence in case of dispute that no guarantee, warranty or condition whatsoever was given or implied.
 7. In the event of any dispute in respect to the sale of any lot:-
 - (i) The purchaser shall nevertheless be obliged to pay to the auctioneer the full purchase price and any other moneys or interest payable by the purchaser in accordance with these Terms and Conditions;
 - (ii) The vendor and the purchaser shall resolve the dispute between themselves;
 - (iii) The auctioneer shall have no liability or responsibility in regard to the dispute; and
 - (iv) No lot shall be returned to the auctioneer and the purchaser shall indemnify the auctioneer for all costs, expenses and damages which the auctioneer is put to or incurs by reason of the purchaser so doing.
 8. The name of the vendor for whom the auctioneer acts is acknowledged to have been furnished to purchasers prior to sale and further particulars will in all cases be furnished to a purchaser if required. In the case of any dispute the remedy of the purchaser shall be against the vendor only and in no case or under any circumstances against the auctioneer who is to be regarded for all intents and purposes as agent for a disclosed principal.
 9. (a) PAYMENT - Unless prior credit arrangements have been made in writing with the auctioneer the full purchase price for each lot shall be due and payable to the auctioneer in cash upon acceptance of the highest bid or the highest bidders' offer by the vendor and prior to delivery. Notwithstanding that delivery is given to or possession obtained by the purchaser or his representative prior to the payment of the purchase money in full the property in any lot which is sold shall not pass to the purchaser until the full purchase price and cheques, promissory notes, bills of exchange, acceptance orders or drafts given in connection with such payment have been paid and liquidated and until property shall pass, the purchaser shall hold such lot as Bailee, provided that in all cases should such payment not have been made and liquidated within 14 days of the date of the sale the auctioneer reserves the right to:-
 - (i) Rescind the contract on behalf of the vendor and repossess and resell any lot;
 - (ii) Recover from the purchaser interest upon the purchase price at a rate per annum which aggregates the AMBA Bill Rate and two percentum. For the purposes of this condition, the expression "The AMBA Bill Rate" is the rate published by the Australian Merchant Banker's Association in good faith as at the date of the sale as its Bill Rate for 180 day Bills of Exchange expressed as a percentage per annum. If at any time the AMBA Bill Rate becomes unavailable for any reason, the auctioneer shall determine and advise the purchaser for the interest rate to apply for the purpose of this condition.
 9. (b) The auctioneer is selling as the del credere agent of the vendor and the full purchase price of any lot sold shall be payable by the purchaser to the auctioneer and be fully recoverable by the auctioneer in its own name.
 10. If the purchaser shall neglect or fail to comply with any of the within conditions any lot purchased by him may be immediately resold by Public Auction or Private Contract, with or without notice, at the risk of the former purchaser, who will be held responsible for all loss and expenses arising out of such resale, and shall not participate in any profit accruing therefrom.
 11. Any vendor or purchaser removing the Sale Number from any lot after it has been sold will fully indemnify all affected parties for any loss, costs or damages should the lot be wrongly delivered.
 12. The purchasers, if more than one, shall be jointly and severally bound by these Terms and Conditions and shall jointly and severally carry out and perform sale.
 13. Any person who advances a bid on a lot shall do so on the expressed condition and understanding that should that person's bid be the highest bid and such bid is accepted by the vendor, then that person will be held personally liable for the price so agreed upon, regardless of the fact that that person may be acting on behalf of another party, either disclosed or undisclosed to the vendor or the auctioneer, provided however that this condition shall not in any way negate the vendor's right to claim against any principal and in such case the bidder's liability shall be construed to be by way of guarantee.
 14. The auctioneer may, should it think fit, make arrangements on a purchaser's behalf, for the feeding, watering, trucking, shipping of and general attendance to any lot after sale but no responsibility will be accepted by the auctioneer and all such service will be at the purchaser's risk and expense.
 15. No lot will be delivered until the sales invoice has been checked and signed by the purchaser or his duly authorised representative.
 16. (a) Each lot in all cases shall be sold with all faults, if any, and excepting those conditions and warranties implied by the Trades Practices Act or any applicable State legislation which cannot be contractually these Terms and Conditions of Sale, any express or implied condition, statement or warranty, statutory or otherwise, is hereby executed. The auctioneer is not liable in respect of any error, misdescription or omission shall entitle the purchaser to annul the sale or reject the lot or claim any compensation, damage or abatement in price.
 16. (b) Each lot will be sold subject to passing all veterinary tests required by the law of the State or country to which the purchaser intends to transport that particular lot such tests to be undertaken at the purchaser's expense and concluded immediately following the sale. In the event of a lot failing to pass these tests, the sale shall be null and void, any purchase moneys paid by the purchaser shall be refunded and property in the lot shall revert to remain with the vendor.
 17. In the event of a dispute as to whether a lot is a breeder, such dispute shall be resolved by the vendor and the purchaser, and the auctioneer, while he shall use his best endeavours to assist, shall have no liability or responsibility in that regard. In the event that a lot is alleged or proved not to be a breeder, the purchaser shall nevertheless be obliged to pay the auctioneer the full purchase price and any other moneys or interest payable by the purchaser in accordance with these Terms and Conditions.
 18. (a) Each lot shall be at the risk of the vendor in respect of any damage or injury, whether by disease, accident or otherwise, for the period that the lot be in the custody of the auctioneer, PROVIDED THAT the auctioneer, its servants, agents and employees shall use all reasonable care to protect and control the lot while it is in the auctioneer's custody AND PROVIDED THAT when a lot has been sold, it shall be at the risk of the purchaser in all respects.
 18. (b) If any vendor brings to the premises any lot which is dangerous, or infected with any disease, that vendor shall be liable for all injury, damages, costs, losses or expenses which the auctioneer may sustain, incur or be put to either directly or indirectly as a result of the vendor so doing. The auctioneer reserves the right in its absolute discretion, to exclude from the sale venue or dispose of any lot which in its opinion shows signs of any disease, whether infectious, contagious or not, or of any serious fault or of being dangerous.
 19. DELIVERY. Except at the discretion of the auctioneer, no lot shall be delivered to the purchaser unless payment of the purchase money together with any additional charges incurred including those expenses incurred by the auctioneer, pursuant to Condition 14 hereof, is first made by the purchaser to the auctioneer. Release of lots may be withheld by the auctioneer until personal cheques are cleared.
 20. In these Conditions:-
 - (a) References to "auctioneer" shall be taken to mean as the contest so admits, the Selling Agent or any member, subsidiary or related corporation or body, officer, agent or employee thereof, authorised by the vendor to conduct the sale of the lot.
 - (b) "Purchaser" shall have the meaning ascribed to it in Condition 1.
 - (c) "Vendor" shall mean the person or corporation upon whose account lots are offered for sale and where a stud or farm is named shall mean the proprietor of that stud or farm.
 - (d) "Lot" shall be taken to mean the animal offered for sale and/or sold by the auctioneer on behalf of a vendor.
- IMPORTANT NOTICE The Vendor and the Selling Agent, its members, subsidiary or related corporations, officers, agents and employees for themselves and for those for whom they act while exercising due care provide all information without responsibility and give no guarantee whatsoever as to its accuracy.
- All persons who attend the sale do so entirely at their risk and the Vendor and the Selling Agent, its members, subsidiary or related corporations, officers, agents, employees and its principals, for themselves and for those for whom they act, do not assume or accept any responsibility or liability of whatever nature for any injury or damage whatsoever which may occur.

BUYER'S INSTRUCTION SLIP

NO VERBAL INSTRUCTIONS CAN BE ACCEPTED

NAME

ADDRESS.....
.....

PHONE NUMBER.....

LOTS PURCHASED.....

ROAD: Carrier's Name.....

ROAD: Directions.....
.....

INSURANCE PERIOD: 3 months 6 months 12 months

ACCOUNT TO.....

TRANSFER BULL: Yes No STUD PREFIX:..... SOCIETY ID:.....

SIGNATURE OF BUYER.....

NOTES

.....
.....
.....
.....
.....
.....
.....
.....
.....
.....
.....

Ascot New Design H7



LOT 3

Ascot Grand Redemption G52E



LOT 32

Ascot Africa G19



LOT 6

Ascot Hands Down H89E



LOT 42

Ascot Evident H146



LOT 13

Ascot Herald H32E



LOT 43



SCAN CODE OR LOG ON TO OUR WEBSITE TO WATCH OUR PRE-SALE VIDEO

